

Cl. I, Div. 1 and 2, Groups B, C, D Ex d IIB + H2 T6, IP66
 Cl. II, Div. 1, Groups E, F, G Explosionproof
 Cl. II, Div. 2, Groups F, G Dust-Ignitionproof
 Cl. III Raintight
 NEMA 3, 4, 4X*, 7, 9 Wet Locations

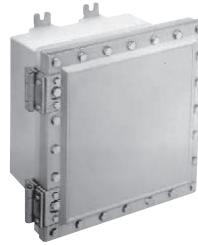
Applications:

EJB junction boxes are used in threaded rigid conduit systems in hazardous areas:

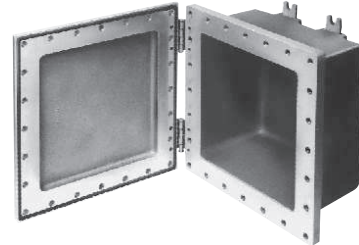
- As a junction or pull box
- To provide enclosures for splices and branch circuit taps
- For housing terminal blocks, relays and other electrical devices
- Indoors or outdoors in damp, wet, dusty, corrosive, hazardous locations
- Where exposure to frequent or heavy rain, water, spray, moisture, and humidity is common, such as: offshore drilling facilities, cooling towers, coal preparation and handling facilities and sewage and waste water treatment plant
- In areas which are hazardous due to the presence of hydrogen or gases and vapors of equivalent hazard such as found in process industries, missile bases and gas manufacturing plants

Features:

- Style C boxes provided with aluminum plate cover as standard, allowing for field addition of cover device holes
- Stainless steel cover bolts (Style C only)
- Ground joint cover opening provides maximum opening for pulling wires or mounting equipment
- Walls of bodies may be drilled and tapped for conduit entries as shown in listings
- Stud bolts in diagonally opposite corners of body aid in aligning cover to body during installation (not furnished with hinged covers)
- All Style C bodies are provided with captive, triple lead, quick release hex head stainless steel bolts with spring loaded action which provides clear indication that cover bolts are fully retracted from the body
- External flange design – wide unobstructed cover opening provides a completely accessible interior for wiring and electrical equipment
- Square corners of enclosure body provide maximum interior space and area for conduit openings
- Internal grounding lug provides a means to ground enclosed equipment
- Special neoprene cover gasket provides a watertight seal to meet NEMA 4 requirements, and provides superior protection for enclosed equipment against water/corrosion
- ATEX certified
- Enclosures are machined for field installed mounting plates
- Detachable mounting feet provide mounting flexibility. No need to replace enclosure if mounting feet are broken
- Optional stainless steel hinges provide convenient and easy access for inspection, maintenance and systems changes
- Enclosures are machined to accept field installed hinges



EJB121208 with optional hinged cover



EJB121208 with optional hinged cover and standard neoprene cover gasket

Certifications and Compliances:

- NEC/CEC
 - Class I, Divisions 1 and 2, Groups B*, C† and D‡
 - Class II, Division 1, Groups E, F and G
 - Class II, Division 2, Groups F and G
 - Class III
 - Class I, Zones 1 and 2
- UL Standard 1203
- cUL to CSA Standard C22.2 No. 30
- ATEX: Ex d IIB + H2 T6, IP66
ATEX certificate: PTB 01 ATEX 1020 U
- Enclosure Type 3, 3R, 4, 4X*, 7BCD, 9EFG
- IEC Standard EN:60079-0 and EN:60079-1

Standard Materials:

- Body and cover – copper-free aluminum (suffix -SA items and all Style C), *Feraloy*® iron alloy (Style D)
- Gasket – neoprene
- Cover bolts – stainless steel (Style C), steel (Style D)
- Hinges – stainless steel

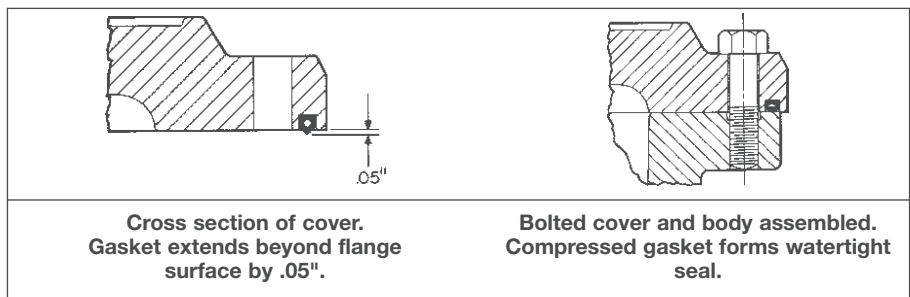
Standard Finishes:

- Copper-free aluminum – natural
- *Feraloy* iron alloy – electrogalvanized and aluminum acrylic paint
- Steel – electrogalvanized
- Extruded aluminum – natural

Options:

Description	Suffix
• Hinged covers	
• Hinges mounted on left (short side).....	S598
Available on all Style C and the following Style D enclosures: EJB101008-SA, EJB120804, EJB120804-SA, EJB120808-SA, and EJB141006-SA	
• Hinge kits for field installation (no field machining required) –	
	EJB KIT 1
• EJB100806 through 361208.....	(2 hinges)
	EJB KIT 3
• EJB361808.....	(3 hinges)
	EJB KIT 4
• EJB362408.....	(4 hinges)
• For EJB101008-SA, EJB120804, EJB120804-SA, EJB120808-SA and EJB141006-SA.....	EJB KIT 5 (2 hinges)
• Factory installed mounting plates for relays, terminal blocks, electrical devices, etc. –	
• Aluminum.....	MP
• Mounting plate kit for field installation (kit includes aluminum mounting plate, pillars and mounting hardware). No field machining required. See Ordering Information on next page.	
• Factory installed terminal blocks. Information on request	

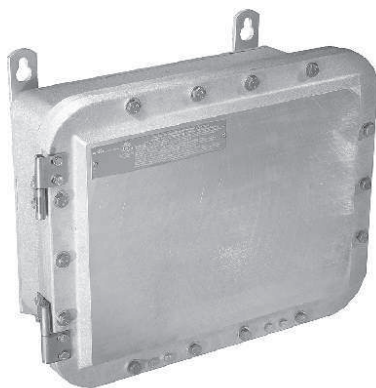
Gasket Detail



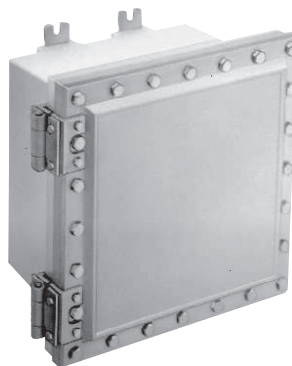
*For Group B, install sealing fitting in each conduit run within 18" of the enclosure. To meet 4X requirement, add suffix S752 or S753.
 †EJB361208, 361808, 362408 and all style D enclosures require sealing fittings within 18" of enclosure for each conduit run for Group C locations.
 ‡Style D enclosures require sealing fittings within 18" of enclosure for each conduit run for Group D locations.
 For conduit liner ordering information, see page 822.

Cl. I, Div. 1 and 2, Groups B, C, D
 Cl. II, Div. 1, Groups E, F, G
 Cl. II, Div. 2, Groups F, G
 Cl. III
 NEMA 3, 4, 4X*, 7, 9

Ex d IIB + H2 T6, IP66
 Explosionproof
 Dust-Ignitionproof
 Raintight
 Wet Locations



Style D



Style C – EJB121208* with optional hinged cover

Style D

Cat. #	Nominal Inside Dimensions		
	Sides (aa)	Top & Bottom (bb)	Depth
Iron			
EJB060404	4	6	4
EJB080604	6	8	4
EJB080606	6	8	6
EJB080806	8	8	6
EJB120804	8	12	4
EJB160404	4	16	4
Aluminum			
EJB060404 SA	4	6	4
EJB080604 SA	6	8	4
EJB080606 SA	6	8	6
EJB080806 SA	8	8	6
EJB120604 SA	6	12	4
EJB120804 SA	8	12	4
EJB120808 SA	8	12	8
EJB160404 SA	4	16	4
EJB101008 SA	10	10	8
EJB141006 SA	10	14	6

Style C

Cat. #	Nominal Inside Dimensions		
	Sides (aa)	Top & Bottom (bb)	Depth
EJB100806	10	8	6
EJB121204	12	12	4
EJB121206	12	12	6
EJB121208	12	12	8
EJB161606	16	16	6
EJB161608	16	16	8
EJB181206	12	18	6
EJB181208	12	18	8
EJB241208	12	24	8
EJB241210	12	24	10
EJB241808	18	24	8
EJB242408	24	24	8
EJB242410	24	24	10
EJB361208	12	36	8
EJB361808	18	36	8
EJB361810	18	36	10
EJB362408	24	36	8
EJB602212†	60	22	12

Ordering Information:

Junction boxes listed can be furnished with drilled and tapped openings, subject to material required and the limitations of maximum size and number of openings as well as spacing, as shown in Tables 1 and 2.

To Order:

Step 1

Select the box required from photos at left, listings, and dimensional drawings on next pages.

Step 2

Select standard conduit arrangement from Table 1 and maximum size conduit opening required from Table 2.

Step 3

Select appropriate symbol for required drilled and tapped opening from Table 3.

Example:

Step 1 – Box required – EJB080806

Step 2 – Arrangement – 2

Step 3 – Openings – two 1" drilled and tapped holes in top and bottom and two 2" drilled and tapped holes on each side.

Step 4 – Symbols are substituted and written in clockwise order starting with "a." When no opening is required at a particular location, use symbol "0" (zero). For this example: CC, GG, CC, GG.

Complete Cat. No. is made up of three parts: Part 1 – box number; Part 2 – arrangement number; Part 3 – symbols for conduit openings. For this example: EJB080806-2-CC-GG-CC-GG

If none of the standard arrangements meet requirements, send a sketch showing junction box number with size and location of each conduit opening desired.

EJB Mounting Plate Kits

(For Field Installation)

Select kit number that matches junction box number.

Example: EJB-MP1410 is used in EJB141006-SA

Cat. # Style C	Cat. # Style D
EJB MP1008‡	EJB MP0604
EJB MP1212‡	EJB MP0806
EJB MP1616‡	EJB MP0808
EJB MP1812	EJB MP1206
EJB MP2412	EJB MP1208
EJB MP2418	EJB MP1604
EJB MP2424	EJB MP1010
EJB MP3612	EJB MP1410
EJB MP3618	
EJB MP3624	

†Class I, Div. 1 and 2, Groups C and D only.

‡Plate has no center hole.

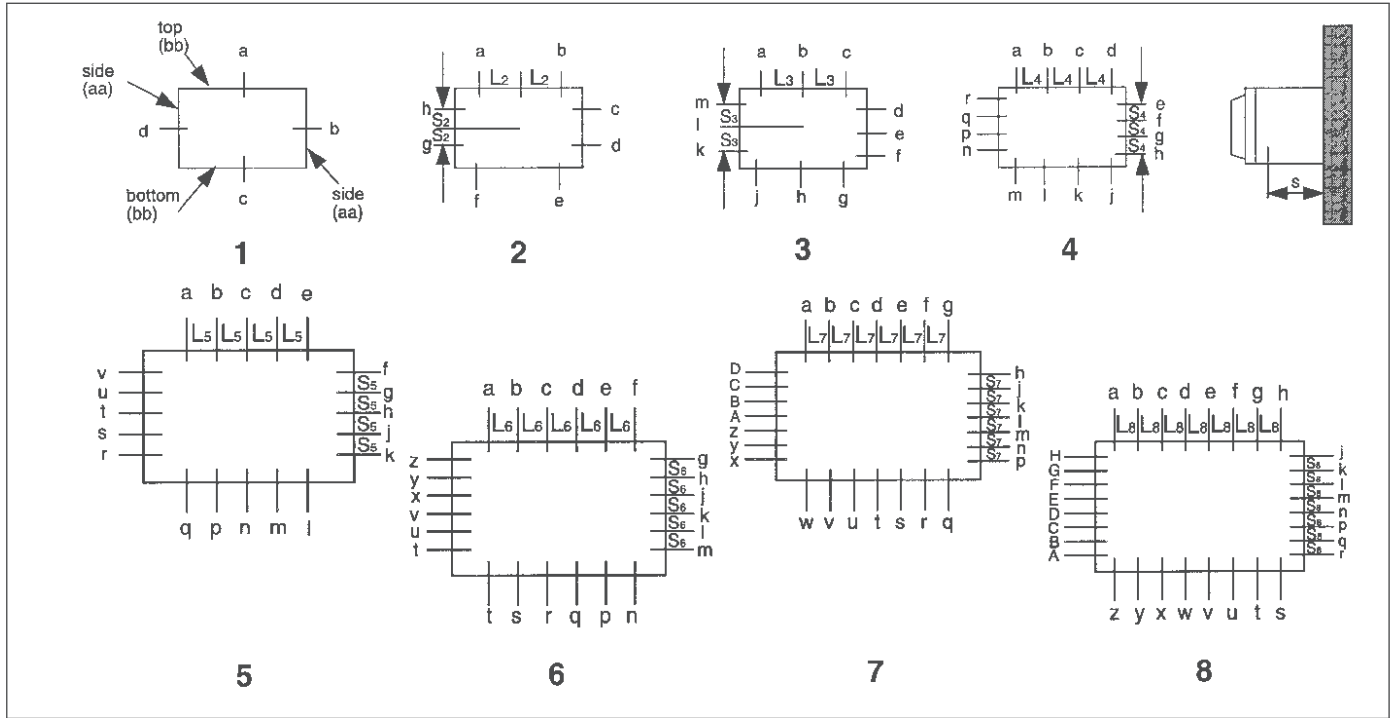
*See Compliances on previous page.

For conduit liner ordering information, see page 822.

1E EJB Junction Boxes

Ordering Information

Table 1
Conduit Arrangement Diagrams



1E

Table 2
Conduit Arrangements – Style D

Maximum Trade Size and Number of Openings

Cat. #	Top and Bottom (bb)*				Sides (aa)				Spacing Dimensions						
	1	2	3	4	1	2	3	4	S	L ₂	S ₂	L ₃	S ₃	L ₄	S ₄
EJB060404	2	1 ¹ / ₄	1 ¹ / ₂	—	2	1 ¹ / ₂	—	—	2 ⁵ / ₈	1 ⁵ / ₈	1 ¹ / ₁₆	2 ¹ / ₈	—	—	—
EJB080604	2	2	1	1 ¹ / ₂	2	1 ¹ / ₄	1 ¹ / ₂	—	2 ⁵ / ₈	2 ¹ / ₈	1 ⁵ / ₈	2 ³ / ₄	2 ¹ / ₈	2 ¹ / ₁₆	—
EJB080606	3 ¹ / ₂	2	1	1 ¹ / ₂	3 ¹ / ₂	1 ¹ / ₄	1 ¹ / ₂	—	3 ³ / ₄	2 ¹ / ₄	1 ⁵ / ₈	2 ³ / ₄	2 ¹ / ₈	2 ¹ / ₁₆	—
EJB080806	3 ¹ / ₂	2	1	1 ¹ / ₂	3 ¹ / ₂	2	1	1 ¹ / ₂	3 ³ / ₄	2 ¹ / ₄	2 ¹ / ₄	2 ³ / ₄	2 ³ / ₄	2 ¹ / ₁₆	2 ¹ / ₁₆
EJB101008	4	2 ¹ / ₂	1 ¹ / ₂	1	4	2 ¹ / ₂	1 ¹ / ₂	1	4 ³ / ₄	2 ³ / ₄	2 ³ / ₄	3 ⁵ / ₈	3 ⁵ / ₈	2 ⁹ / ₁₆	2 ⁹ / ₁₆
EJB120604	2	2	2	1 ¹ / ₄	2	1 ¹ / ₂	1 ¹ / ₂	—	2 ³ / ₄	3	1 ⁵ / ₈	4 ¹ / ₈	2 ¹ / ₈	3 ¹ / ₈	—
EJB120804	2	2	2	1 ¹ / ₄	2	2	1	1 ¹ / ₂	2 ¹ / ₈	3	2 ¹ / ₄	4 ¹ / ₈	2 ³ / ₄	3 ¹ / ₁₆	2 ¹ / ₁₆
EJB120808	4	4	2	1 ¹ / ₄	4	2	1	1 ¹ / ₂	4 ³ / ₄	3 ¹ / ₄	2 ¹ / ₄	4 ¹ / ₈	2 ³ / ₄	3 ¹ / ₁₆	2 ¹ / ₁₆
EJB141006	3 ¹ / ₂	3 ¹ / ₂	2 ¹ / ₂	1 ¹ / ₂	3 ¹ / ₂	2 ¹ / ₂	1 ¹ / ₂	1	3 ⁷ / ₈	3 ³ / ₄	2 ³ / ₄	5	3 ⁹ / ₁₆	3 ⁵ / ₈	2 ⁹ / ₁₆
EJB160404	2	2	2	2	2	1 ¹ / ₂	—	—	2 ⁵ / ₈	3	1 ¹ / ₁₆	6	—	4 ¹ / ₈	—

*Top and bottom are longer dimensions on enclosures which are not square.

Conduit seals are required in all conduit entrances for Class I, Division 1, Group B hazardous areas, and for EJB361208, EJB361808, EJB361810, EJB362408, and all Style D enclosures when used in Class I, Division 1, Group C hazardous areas. For other sealing requirements, consult the National Electrical Code*. Where standard arrangements are not adequate, special drilling and tapping can be ordered, or instructions can be provided for field drilling and tapping. Breathers and drains must be ordered separately. Maximum trade size for Group B application is 4".

Ordering Information

Table 2 - Continued

Conduit Arrangements - Style C Drilled and Tapped Openings - Groups B‡, C and D

Cat. #	Maximum Trade Size and Number of Openings								Sides (aa)							
	Top and Bottom (bb)*															
	1	2	3	4	5	6	7	8	1	2	3	4	5	6	7	8
EJB100806	3/2	3	1 1/2	1 1/4	—	—	—	—	3 1/2	2 1/2	1 1/2	1 1/4	—	—	—	—
EJB121204	1 1/2	1 1/2	1 1/2	1 1/4	1	3/4	1/2	—	1 1/2	1 1/2	1 1/2	1 1/4	1	3/4	1/2	—
EJB121206	3 1/2	3 1/2	1 1/2	1 1/4	1	3/4	1/2	—	3 1/2	3 1/2	1 1/2	1 1/4	1	3/4	1/2	—
EJB121208	5	3 1/2	1 1/2	1 1/4	1	3/4	1/2	—	5	3 1/2	1 1/2	1 1/4	1	3/4	1/2	—
EJB161606	3 1/2	3 1/2	2 1/2	2	1 1/2	1 1/4	1	3/4	3 1/2	3 1/2	2 1/2	2	1 1/2	1 1/4	1	3/4
EJB161608	5	5	3	2	1 1/2	1 1/4	1	3/4	5	5	3	2	1 1/2	1 1/4	1	3/4
EJB181206	3 1/2	3 1/2	3 1/2	2 1/2	1 1/2	1 1/2	1	3/4	3 1/2	3 1/2	1 1/2	1 1/4	1	3/4	1/2	—
EJB181208	5	5	3 1/2	2 1/2	2	1 1/2	1	1	5	3 1/2	1 1/2	1 1/4	1	3/4	1/2	—
EJB241208	5	5	5	3 1/2	3	2 1/2	2	1 1/2	5	3 1/2	1 1/2	1 1/4	1	1	1/2	—
EJB241210	6	6	5	3 1/2	3	2 1/2	2	1 1/2	6	3 1/2	1 1/2	1 1/4	1	1	1/2	—
EJB241808	5	5	5	3 1/2	3	2 1/2	2	1 1/2	5	5	3 1/2	2 1/2	2	1 1/2	1 1/4	1
EJB242408	5	5	5	3 1/2	3	2 1/2	2	1 1/2	5	5	5	3 1/2	3	2 1/2	2	1 1/2
EJB242410	6	6	5	3 1/2	3	2 1/2	2	1 1/2	6	6	5	3 1/2	3	2 1/2	2	1 1/2
EJB361208	5	5	5	5	4	4	3 1/2	2 1/2	5	3 1/2	1 1/2	1 1/4	1	3/4	1/2	—
EJB361808	5	5	5	5	4	4	3 1/2	2 1/2	5	5	3 1/2	2 1/2	2	1 1/2	1 1/4	1
EJB361810	6	6	5	5	4	4	3 1/2	2 1/2	6	6	3 1/2	2 1/2	2	1 1/2	1 1/4	1
EJB362408	5	5	5	5	4	4	3 1/2	2 1/2	5	5	5	3 1/2	3	2 1/2	2	1 1/2

Spacing Dimensions†

Cat. #	S	L ₂	S ₂	L ₃	S ₃	L ₄	S ₄	L ₅	S ₅	L ₆	S ₆	L ₇	S ₇	L ₈	S ₈
EJB100806	3 3/8	2 3/4	1 7/8	3	2 3/8	2 1/4	1 3/4	—	—	—	—	—	—	—	—
EJB121204	3	2 1/4	2 1/4	3 5/8	3 5/8	3 1/16	3 1/16	2	2	1 3/4	1 3/4	1 1/2	1 1/2	—	—
EJB121206	3 3/4	3	3	3 5/8	3 5/8	3 1/16	3 1/16	2	2	1 3/4	1 3/4	1 1/2	1 1/2	—	—
EJB121208	4 3/4	3	3	3 5/8	3 5/8	3 1/16	3 1/16	2	2	1 3/4	1 3/4	1 1/2	1 1/2	—	—
EJB161606	3 3/4	3	3	4 5/8	4 5/8	4 3/16	4 3/16	2 3/4	2 3/4	2 1/2	2 1/2	2	2	1 3/4	1 3/4
EJB161608	4 3/4	3 1/4	3 1/4	4 5/8	4 5/8	4 3/16	4 3/16	2 3/4	2 3/4	2 1/2	2 1/2	2	2	1 3/4	1 3/4
EJB181206	3 3/4	3	3	6	3 5/8	4 5/8	3 1/16	2 3/4	2	2 3/4	1 3/4	2	1 1/2	1 3/4	—
EJB181208	4 3/4	4 3/16	3	6	3 5/8	4 5/8	3 1/16	3 1/4	2	2 3/4	1 3/4	2	1 1/2	2	—
EJB241208	5 1/8	4 3/16	3	8 7/16	3 5/8	6	3 1/16	4 5/8	2	3 7/8	2	3 1/4	1 1/2	2 3/4	—
EJB241210	6 1/8	4 3/4	3	8 7/16	3 5/8	6	3 1/16	4 5/8	2	3 7/8	2	3 1/4	1 1/2	2 3/4	—
EJB241808	5 1/4	4 3/16	4 3/16	8 7/16	6	6	4 5/8	4 5/8	3 1/4	3 7/8	2 3/4	3 1/4	2 1/2	2 3/4	2
EJB242408	5 5/8	4 3/16	4 3/16	8 7/16	8 7/16	6	6	4 5/8	4 5/8	3 7/8	3 7/8	3 1/4	3 1/4	2 3/4	2 3/4
EJB242410	6 3/8	4 3/4	4 3/4	8 7/16	8 7/16	6	6	4 5/8	4 5/8	3 7/8	3 7/8	3 1/4	3 1/4	2 3/4	2 3/4
EJB361208	4 3/4	4 7/16	3	8 7/16	3 5/8	8 7/16	3 1/16	5 3/4	2	5 3/4	1 3/4	5 1/8	1 1/2	3 7/8	—
EJB361808	5 1/2	4 7/16	4 7/16	8 7/16	6	8 7/16	4 5/8	5 3/4	3 1/4	5 3/4	2 3/4	5 1/8	2 1/2	3 7/8	2
EJB361810	6 1/2	4 3/4	4 3/4	8 7/16	6	8 7/16	8 7/16	5 3/4	3 1/4	5 3/4	2 3/4	5 1/8	2 1/2	3 7/8	2
EJB362408	6	4 3/4	4 3/16	8 7/16	8 7/16	6	5 3/4	4 5/8	5 3/4	5 3/4	3 7/8	5 1/8	3 1/4	3 7/8	2 3/4

Conduit seals are required in all conduit entrances for Class I, Division 1, Group B hazardous areas, and for EJB361208, EJB361808, EJB361810, and EJB362408 enclosures when used in Class I, Division 1, Group C hazardous areas. For other sealing requirements, consult the National Electrical Code®. Where standard arrangements are not adequate, special drilling and tapping can be ordered, or instructions can be provided for field drilling and tapping. Breathers and drains must be ordered separately - see page 164.

Table 3

Symbols for Openings

Conduit Size	Drilled and Tapped Hole Symbol
1/2	A
3/4	B
1	C
1 1/4	E
1 1/2	F
2	G
2 1/2	H
3	J
3 1/2	K
4	L
5	M
6	N
None	O

‡Maximum trade size for Group B applications is 4".

*Top and bottom are longer dimensions on enclosures which are not square.

†Spacing dimensions for Group B boxes are based on use of EYS11-101 sealing fitting in conduit.

For conduit liner ordering information, see page 822.

Dimensions

Dimensions

In Inches:

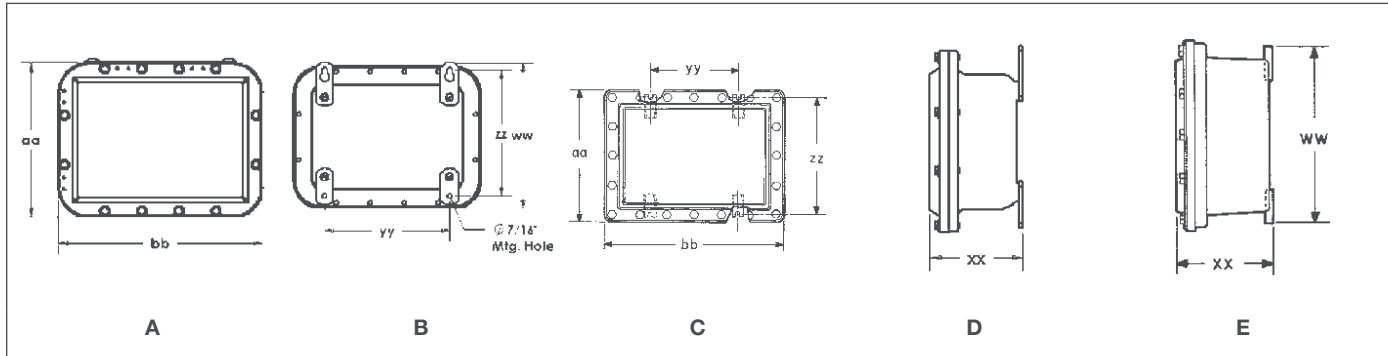


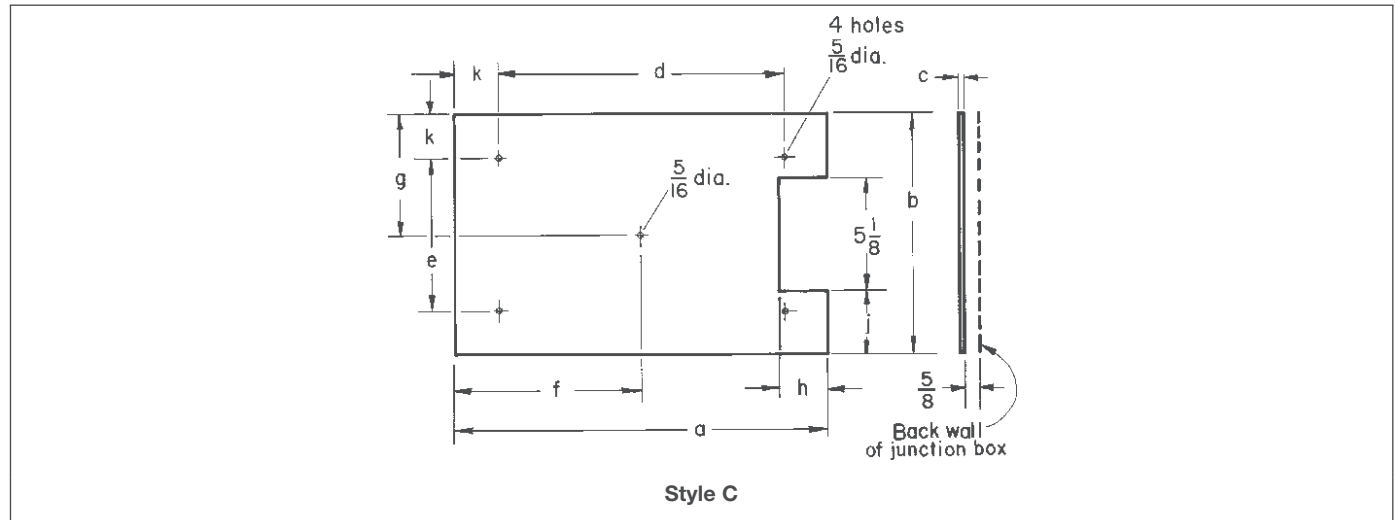
Table 4
Outside Dimensions

Cat. #	Diagram	aa	bb	Mtg. Hole	ww	xx	yy	zz	Net Weight (lbs.) w/ Cover
EJB060404	A, B, D	8 ¹¹ / ₃₂	10 ¹¹ / ₃₂	7/16	8 ³ / ₄	6 ¹ / ₈	5	7 ¹ / ₈	43
EJB080604		10 ¹⁵ / ₃₂	12 ¹⁵ / ₃₂	7/16	10 ²⁵ / ₃₂	6 ³ / ₁₆	7	9 ¹ / ₈	64
EJB080606		10 ¹⁵ / ₃₂	12 ¹⁵ / ₃₂	7/16	10 ²⁵ / ₃₂	8 ³ / ₁₆	7	9 ¹ / ₈	84
EJB080806		12 ¹⁵ / ₃₂	12 ¹⁵ / ₃₂	7/16	12 ²⁵ / ₃₂	8 ⁷ / ₃₂	7	11 ¹ / ₈	98
EJB120804		12 ¹ / ₂	16 ¹ / ₂	7/16	12 ¹³ / ₁₆	6 ³ / ₈	11	11 ¹ / ₈	103
EJB160404		8 ¹ / ₂	20 ¹ / ₂	7/16	8 ¹³ / ₁₆	6 ⁵ / ₃₂	15	7 ¹ / ₈	86
EJB060404 SA		8 ¹¹ / ₃₂	10 ¹¹ / ₃₂	7/16	8 ³ / ₄	6 ¹ / ₈	5	7 ¹ / ₈	16
EJB080604 SA		10 ¹⁵ / ₃₂	12 ¹⁵ / ₃₂	7/16	10 ²⁵ / ₃₂	6 ³ / ₁₆	7	9 ¹ / ₈	24
EJB080606 SA		10 ¹⁵ / ₃₂	12 ¹⁵ / ₃₂	7/16	10 ²⁵ / ₃₂	8 ³ / ₁₆	7	9 ¹ / ₈	32
EJB080806 SA		12 ¹⁵ / ₃₂	12 ¹⁵ / ₃₂	7/16	12 ²⁵ / ₃₂	8 ⁷ / ₃₂	7	11 ¹ / ₈	37
EJB120604 SA		10 ¹ / ₂	16 ¹ / ₂	7/16	10 ¹³ / ₁₆	6 ³ / ₁₆	11	9 ¹ / ₈	32
EJB120804 SA		12 ¹ / ₂	16 ¹ / ₂	7/16	12 ¹³ / ₁₆	6 ³ / ₈	11	11 ¹ / ₈	39
EJB120808 SA		12 ¹ / ₂	16 ¹ / ₂	7/16	12 ¹³ / ₁₆	10 ³ / ₈	11	11 ¹ / ₈	56
EJB160404 SA		8 ¹ / ₂	20 ¹ / ₂	7/16	8 ¹³ / ₁₆	6 ⁵ / ₃₂	15	7 ¹ / ₈	33
EJB101008 SA	14 ²¹ / ₃₂	14 ²¹ / ₃₂	7/16	14 ⁷ / ₈	10 ³ / ₈	9	13 ³ / ₈	59	
EJB141006 SA	14 ²¹ / ₃₂	18 ²¹ / ₃₂	7/16	14 ⁷ / ₈	8 ¹⁵ / ₃₂	13	13 ³ / ₈	66	
EJB100806	C and E	13 ³ / ₃₂	15 ¹ / ₃₂	9/16	12 ¹ / ₄	8 ⁹ / ₁₆	5 ¹ / ₂	11 ¹ / ₄	60
EJB121204		17 ¹ / ₁₆	17 ¹ / ₁₆	9/16	16 ¹ / ₈	6 ¹³ / ₁₆	5 ¹ / ₂	15 ⁵ / ₈	60
EJB121206		17 ¹ / ₁₆	17 ¹ / ₁₆	9/16	16 ¹ / ₈	8 ⁷ / ₈	5 ¹ / ₂	15 ⁵ / ₈	70
EJB121208		17 ¹ / ₁₆	17 ¹ / ₁₆	9/16	16 ¹ / ₈	10 ⁷ / ₈	5 ¹ / ₂	15 ⁵ / ₈	80
EJB161606		21 ³ / ₁₆	21 ³ / ₁₆	9/16	20 ¹ / ₈	8 ⁷ / ₈	9 ¹ / ₂	19 ¹ / ₈	103
EJB161608		21 ³ / ₁₆	21 ³ / ₁₆	9/16	20 ¹ / ₈	10 ⁷ / ₈	9 ¹ / ₂	19 ¹ / ₈	113
EJB181206		17 ⁵ / ₁₆	23 ³ / ₁₆	9/16	16 ¹ / ₈	8 ⁷ / ₈	11 ¹ / ₂	15 ⁵ / ₈	101
EJB181208		17 ⁵ / ₁₆	23 ³ / ₁₆	9/16	16 ¹ / ₈	10 ⁷ / ₈	11 ¹ / ₂	15 ⁵ / ₈	110
EJB241208		17 ⁹ / ₁₆	29 ⁹ / ₁₆	9/16	16 ¹ / ₈	11 ³ / ₄	17 ¹ / ₂	15 ⁵ / ₈	149
EJB241210		17 ⁹ / ₁₆	29 ⁹ / ₁₆	9/16	16 ¹ / ₈	13 ³ / ₄	17 ¹ / ₂	15 ⁵ / ₈	160
EJB241808		23 ⁹ / ₁₆	29 ⁹ / ₈	1 ¹ / ₁₆	23 ¹ / ₂	12 ¹ / ₄	17 ¹ / ₄	21 ⁷ / ₈	243
EJB242408		29 ⁹ / ₁₆	29 ⁹ / ₁₆	1 ¹ / ₁₆	29 ¹ / ₂	12 ⁵ / ₁₆	16 ¹ / ₄	27 ¹ / ₈	296
EJB242410		29 ⁹ / ₁₆	29 ⁹ / ₁₆	1 ¹ / ₁₆	29 ¹ / ₂	14 ⁵ / ₁₆	16 ¹ / ₄	27 ¹ / ₈	322
EJB361208		17 ¹ / ₁₆	41 ¹ / ₁₆	9/16	16 ¹ / ₈	11 ¹¹ / ₁₆	29 ¹ / ₂	15 ⁵ / ₈	185
EJB361808		23 ¹⁵ / ₁₆	41 ¹⁵ / ₁₆	1 ¹ / ₁₆	23 ¹ / ₂	12 ⁷ / ₁₆	28 ¹ / ₄	21 ⁷ / ₈	351
EJB361810		23 ¹⁵ / ₁₆	41 ¹⁵ / ₁₆	1 ¹ / ₁₆	23 ¹ / ₄	14 ¹ / ₄	28 ¹ / ₄	21 ⁷ / ₈	396
EJB362408		30 ³ / ₁₆	42 ³ / ₁₆	1 ¹ / ₁₆	31 ¹ / ₄	12 ⁵ / ₈	28 ¹ / ₄	29 ¹ / ₂	571

For conduit liner ordering information, see page 822.

Mounting Plate Dimensions

Table 5
Mounting Plate Dimensions



Style C

Cat. #	a	b	c	d	e	f	g	h	j	k
EJB MP1008‡	9	7	0.125	7	5			1 ³ / ₈	1 ¹ / ₂	1
EJB MP1212‡	11	11	0.125	9	9			1 ³ / ₈	1 ¹ / ₂	1
EJB MP1616‡	15	15	0.125	13	13			1 ³ / ₈	1 ¹ / ₂	1
EJB MP1812	17	11	0.125	13	7	8 ¹ / ₂	5 ¹ / ₂	2 ³ / ₈	2 ¹ / ₂	2
EJB MP2412	23	11	0.125	19	7	11 ¹ / ₂	5 ¹ / ₂	2 ³ / ₈	2 ¹ / ₂	2
EJB MP2418	22	16	0.125	19	13	11	8	1 ⁷ / ₈	2	1 ¹ / ₂
EJB MP2424	22	22	0.125	19	19	11	11	1 ⁷ / ₈	2	1 ¹ / ₂
EJB MP3612	34	10	0.125	31	7	17	5	1 ⁷ / ₈	2	1 ¹ / ₂
EJB MP3618	33 ¹ / ₂	15 ¹ / ₂	0.125	31	13	16 ³ / ₄	7 ³ / ₄	1 ⁵ / ₈	1 ³ / ₄	1 ¹ / ₄
EJB MP3624	34	22	0.125	31	19	17	11	1 ⁷ / ₈	2	1 ¹ / ₂

‡Plate has no center hole.

*Certifications and Compliances see page 694.

For conduit liner ordering information, see page 822.

1E

Applications:

EJB602212 junction box is used in threaded rigid conduit systems in hazardous areas:

- As a junction or pull box
- As an enclosure for splices and branch circuit taps
- For housing terminal blocks, relays, and other electrical devices
- As a mounting box for multi-device control panels with EMP barrel assemblies (see section 5C)
- Indoors or outdoors in damp, wet, dusty, corrosive locations
- Where exposure to frequent or heavy rain, water, spray, moisture, and humidity is common, such as: offshore drilling facilities, cooling towers, coal preparation and handling facilities, and sewage and waste water treatment plants
- Which are hazardous due to the presence of gases or vapors such as those found in process industries, missile bases, and gas manufacturing plants

Features:

- Ground joint cover opening provides maximum opening for pulling wires or mounting equipment
- Walls of enclosure may be drilled and tapped for conduit entries as shown in Table 2
- External flange design – wide unobstructed cover opening provides a completely accessible interior for wiring and electrical equipment
- Square corners of enclosure body provide maximum interior space and area for conduit openings
- Flat cover provides maximum space for mounting a greater number of control devices
- Internal grounding lug provides a means to ground enclosed equipment
- Special neoprene cover gasket provides a watertight seal to meet UL Type 4 (NEMA 4) requirements, and provides superior protection for enclosed equipment against water/corrosion
- Stainless steel cover bolts provide superior corrosion protection
- Enclosure is machined for field installed mounting plates
- Detachable mounting channels provide mounting flexibility. No need to replace enclosure if mounting channel is broken
- Aluminum hinges provide convenient and easy access for inspection, maintenance, and systems changes
- Safety chain attached to body and cover prevents accidental damage to hinges

Certifications and Compliances:

- NEC:
 - Class I, Division 1 & 2, Groups C, D
 - Class II, Division 1, Groups E, F, G
 - Class II, Division 2, Groups F, G
 - Class III
- UL Standard: 1203
- UL Raintight
- CSA 22.2 No. 18 and 30
- NEMA 3, 4, 7CD, 9EFG

Standard Materials:

- Body and cover – copper-free aluminum
- Gasket – neoprene
- Cover bolts – stainless steel
- Hinges – extruded aluminum

Standard Finishes:

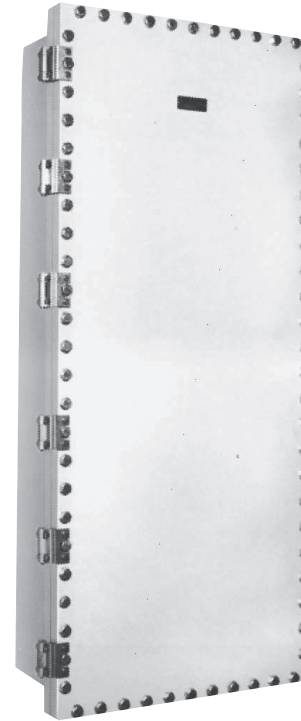
- Copper-free aluminum – natural
- Extruded aluminum – natural
- Stainless steel – natural
- Neoprene – natural

Options:

Description	Suffix
Mounting plate kit for field installation (kit includes aluminum mounting plate, pillars, and mounting hardware).....	EJB-MP6022
Factory installed aluminum mounting plate for relays, terminal blocks, electrical devices, etc.....	MP

Ordering Information:

EJB602212 can be furnished with drilled and tapped openings, subject to the limitations of maximum size and number of openings as well as spacing, as shown in Tables 1 and 2.



To Order:

Step 1
Specify box catalog number – EJB602212

Step 2
Select standard conduit arrangement from Table 1 and maximum allowable size conduit opening from Table 2.

Step 3
Select appropriate symbol for required drilled and tapped opening from Table 3.

Example:
 Step 1 – Box Cat. No. – EJB602212
 Step 2 – Arrangement – 2
 Step 3 – Openings – two 2" drilled and tapped holes in top and bottom and two 2 1/2" drilled and tapped holes evenly spaced on each side.
 Step 4 – Symbols are substituted and written in clockwise order starting with "a". When no opening is required at a particular location, use symbol "0" (zero). For this example:GG-0H0H0-GG-0H0H0. Complete Cat. No. is made up of three parts:
 Part 1 – box number;
 Part 2 – arrangement number;
 Part 3 – symbols for conduit openings. For this example the catalog number is:
 EJB602212-2-GG-0H0H0-GG-0H0H0.

For conduit liner ordering information, see page 822.

Table 1
Conduit Arrangement Diagrams

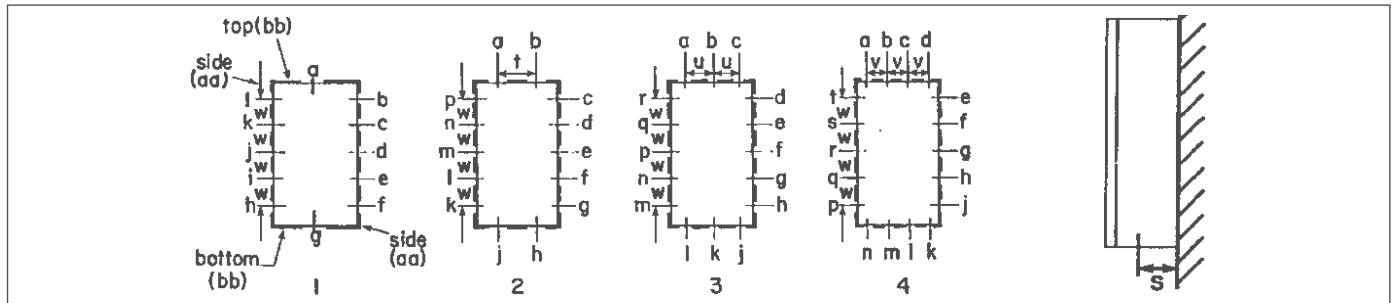


Table 2
Conduit Arrangements

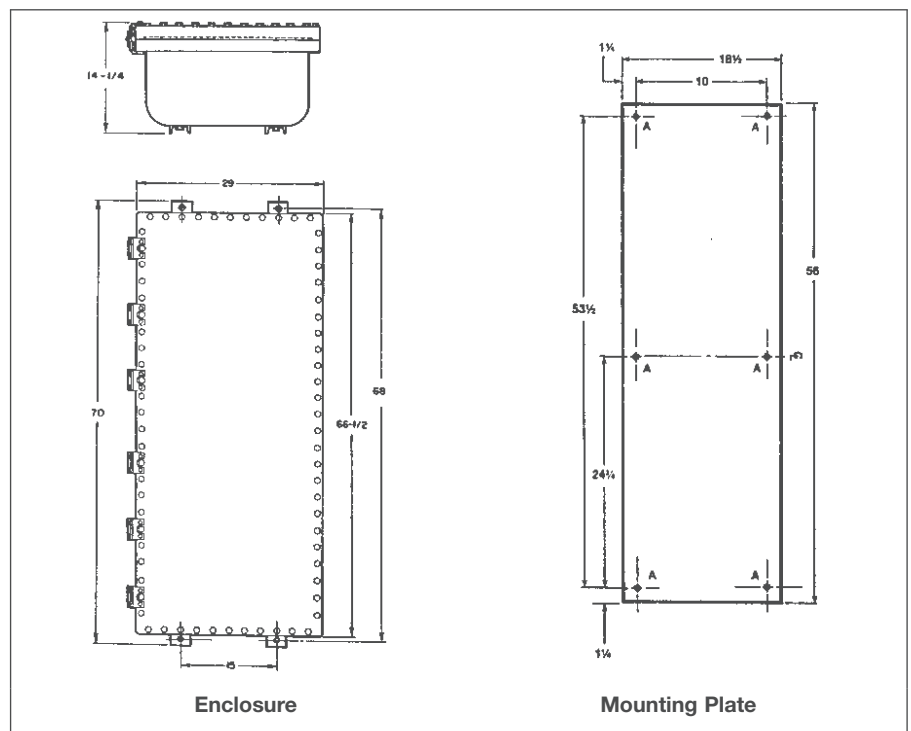
	Maximum Trade Size and Number of Openings										Spacing Dimensions				
	Top and Bottom (bb)				Sides (aa)						s	t	u	v	w
	1	2	3	4	1	2	3	4	5						
EJB602212†	6	6	4	3	6	6	6	6	6	6	6 ³ / ₄	10	7	5 ⁵ / ₈	10

Table 3
Symbols for Openings

Conduit Size	Drilled and Tapped Hole Symbol
1/2	A
3/4	B
1	C
1 1/4	E
1 1/2	F
2	G
2 1/2	H
3	J
3 1/2	K
4	L
5	M
6	N
none	O

Conduit sealing fittings are required on all conduit entrances (within 18" of the enclosure) when used in Class I, Division 1, Group C hazardous areas. For other sealing requirements consult the National Electrical Code.®

Dimensions
In Inches:



Nominal Inside Dimensions		
Sides	Top & Bottom	Depth
60	22	12

For conduit liner ordering information, see page 822.

†Class I, Div. 1 and 2, Groups C and D only.

Cl. I, Div. 1 & 2, Groups B*, C, D
 Cl. I, Zones 1 & 2
 Cl. II, Div. 1, Groups E, F, G
 Cl. II, Div. 2, Groups F, G
 Cl. III

UL and cUL approved
 Ex d IIB + H₂ T6
 Certified to ATEX
 Directive†
 NEMA 3, 7B*CD, 9EFG
 IP66

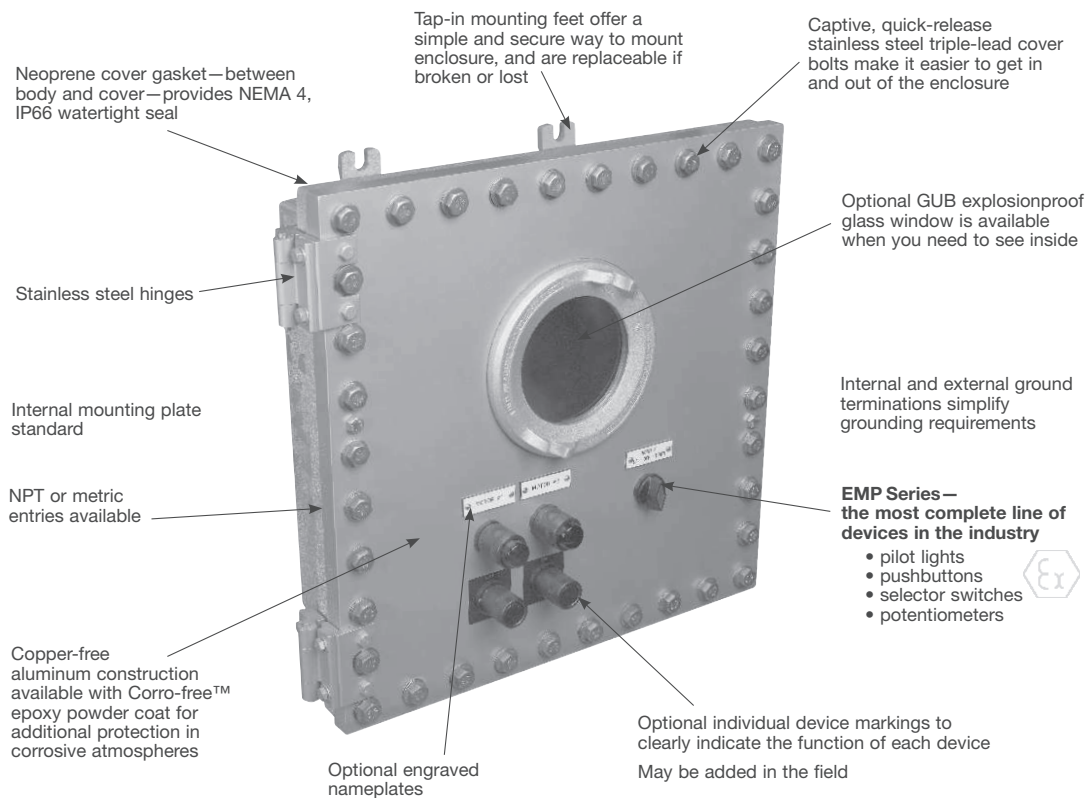
Globally Certified—Individually Customized

The following pages will assist you in choosing the combination of features suited to your needs and requirements. The easy, five-step process will take you through the specification of cover openings, specifying devices, drilled and tapped conduit openings, device locations, and legend and nameplate selection.

After filling out your separate order form for each panel, fax it to your local Cooper Crouse-Hinds Distributor. Please consult the factory for alternatives not detailed in these pages, such as other conduit arrangements, terminal blocks, or circuit breaker operating handles.

Features:

- The foundation of the Custom-Built Control Panel is our tried and tested copper-free aluminum EJB enclosure. This corrosion resistant, heavy-duty enclosure features bolted construction, stainless steel hinges, and flexible tap-in mounting feet.



Certifications and Compliances:

EJB Custom Control Panels

- NEC/CEC:
 - Class I, Divisions 1 & 2, Groups B*, C and D
 - Class I, Zones 1 & 2
 - Class II, Division 1, Groups E, F and G
 - Class II, Division 2, Groups F and G
 - Class III
- NEMA: 3, 7B*CD, 9EFG
- cUL to CSA Standard C22.2 No. 30—C22.2 No. 25 Cl. II (E, F, G)
- Ex d IIB + H₂ T6
- UL Standard 1203
- IP66
- Certified to the ATEX Directive when ordered with -ATEX suffix.
- Custom Control Panel is component certified only. For assembly certification, please consult factory.

*Groups C and D only when ordered with GUB window.

† Certified to the ATEX Directive when ordered with ATEX suffix.

ATEX Certifications

- EJB Enclosure with Conduit Entries & Device Holes

	II 2 G Ex d IIB + H ₂	Certificate #: ITS08ATEX15797U
--	----------------------------------	--------------------------------
- EMP Devices

	II 2 G Ex d IIB + H ₂	Certificate #: ITS07ATEX15652U
--	----------------------------------	--------------------------------
- GUB0108 ATEX Window

	II 2 G Ex d IIB + H ₂	Certificate #: ITS07ATEX15638U
--	----------------------------------	--------------------------------
- ECD Breather/Drain

	II 2 G Ex d IIB + H ₂	Certificate #: ITS07ATEX15639U
--	----------------------------------	--------------------------------

Globally Certified—Individually Customized

Ordering and receiving Cooper Crouse-Hinds EJB Custom-Built Control Panels is now easier and faster than ever. Follow the steps below, fill out a separate order form for each panel, and fax it to your local Cooper Crouse-Hinds Distributor. It's as simple as that!

Easy Five Step Ordering Process:

- 1 Specify cover openings and devices.
- 2 Specify conduit openings.
- 3 Determine device arrangement.
- 4 Specify device location.
- 5 Specify legend and nameplates.

Step 1

Specify the openings required for the cover of the enclosure.

Indicate in Section 1 of the order form the combination of devices, openings without devices, and windows required.

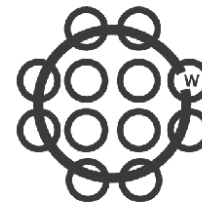
Total the number of device openings required based on the devices, openings and windows specified in Section 1.

Using Table 1, you can determine the smallest size enclosure required based upon the total number of devices/openings and the number of devices a window requires. (NOTE: The actual size of your custom panel enclosure may change based on the number and size of your entry requirements.)

TABLE 1 DEVICE AND WINDOW INFORMATION

Total # of Device Openings Available	Device Layout	EJB Enclosure Catalog Number
9 =	3 X 3	EJB100806
16 =	4 X 4	EJB121204
16 =	4 X 4	EJB121206
16 =	4 X 4	EJB121208
36 =	6 X 6	EJB161606
36 =	6 X 6	EJB161608
24 =	6 X 4	EJB181206
24 =	6 X 4	EJB181208
36 =	9 X 4	EJB241208
36 =	9 X 4	EJB241210
54 =	9 X 6	EJB241808
81 =	9 X 9	EJB242408
81 =	9 X 9	EJB242410
52 =	13 X 4	EJB361208
78 =	13 X 6	EJB361808
78 =	13 X 6	EJB261810
117 =	13 X 9	EJB362408

Requires same area as 12 devices.
May be installed in all boxes.



GUB0108—Symbol W
4-3/4" dia. viewing area

SIZE REQUIREMENTS

EJB Size	Max. No. Windows
121204 to 181208	1
241208 to 362408	2

Globally Certified—Individually Customized

Step 2

Specify the number, size and location of conduit openings required on the sides, top and bottom of the enclosure body using the information in Tables 2, 3, and 4.

Refer to Table 2 to determine if the enclosure selected in Step 1 will accommodate the required conduit openings.
From Table 3, determine the symbol(s) that correspond with the required conduit openings.

Place these symbols in the desired positions using the conduit arrangement diagrams in Table 4.

Any combination of the four arrangement diagrams may be used per side and all positions on a side with openings must have a symbol. The side number (1, 2, 3 or 4) must precede the conduit opening(s) symbols for the respective side. When a side of the enclosure does not require any conduit openings, the side number is omitted from the catalog number.

Enter the complete catalog number, including conduit opening designations, in Section 2 of the order form. Indicate on which side the hinges should be mounted. Check boxes in Section 2 for options desired.

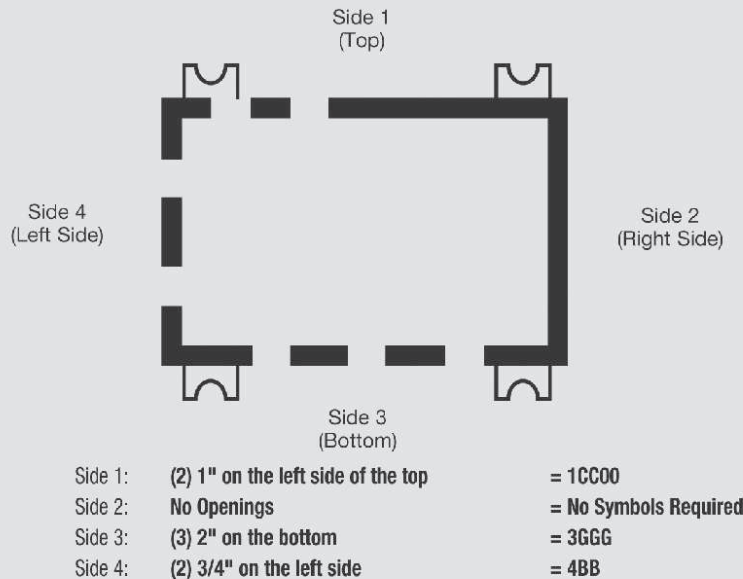
Example:

In Step 1, customer selects an EJB161606 based on the number of devices/openings specified (See Section 1 of sample order form). The following conduit openings are required: (2) 1" on the left side of the top; no openings on the right side; (3) 2" on the bottom; and (2) 3/4" on the left side.

Table 2 indicates the maximum size allowed for three conduit openings in an EJB161606 is 2-1/2". Therefore, an EJB161606 would be suitable.

Table 3 indicates a 3/4" opening is symbol B, a 1" opening is symbol C, a 2" opening is symbol G and no opening is a 0.

Using the conduit arrangement diagrams in Table 4, place the symbols for the desired openings in the appropriate positions. Remember, any combination of the four arrangement diagrams may be used and all positions on a side with openings must have a symbol even if no opening is required in a particular position.



Complete catalog number is: **EJB161606- 1CC003GGG4BB**. Enter the completed catalog number, including conduit opening designations, in Section 2 of the order form. Indicate on which side the hinges should be mounted.

Globally Certified—Individually Customized

TABLE 2

CONDUIT ARRANGEMENTS

CAT #	Maximum Trade Size and Number of Openings								Spacing Dimensions						
	Top and Bottom (bb)				Sides (aa)				S	T	U	V	W	X	Y
	1	2	3	4	1	2	3	4							
Drilled and Tapped Openings															
EJB100806	3-1/2	3	1-1/2	1-1/4	3-1/2	2-1/2	1-1/4	3/4	3-3/4	2-5/16	1-15/16	2-3/4	2-1/2	2-1/2	1-3/4
EJB121204	1-1/2	1-1/2	1-1/2	1-1/4	1-1/2	1-1/2	1-1/2	1-1/4	3	2-1/4	2-1/4	3-5/8	3-5/8	3-1/16	3-1/16
EJB121206	3-1/2	3-1/2	1-1/2	1-1/4	3-1/2	3-1/2	1-1/2	1-1/4	3-3/4	3	3	3-5/8	3-5/8	3-1/16	3-1/16
EJB121208	5	3-1/2	1-1/2	1-1/4	5	3-1/2	1-1/2	1-1/4	4-3/4	3	3	3-5/8	3-5/8	3-1/16	3-1/16
EJB161606	3-1/2	3-1/2	2-1/2	2	3-1/2	3-1/2	2-1/2	2	3-3/4	3	3	4-5/8	4-5/8	4-3/16	4-3/16
EJB161608	5	5	3	2	5	5	3	2	4-3/4	3-1/4	3-1/4	6	4-5/8	4-3/16	4-316
EJB181206	3-1/2	3-1/2	3-1/2	2-1/2	3-1/2	3-1/2	1-1/2	1-1/4	3-3/4	3	3	6	3-5/8	4-5/8	3-1/16
EJB181208	5	5	3-1/2	2-1/2	5	3-1/2	1-1/2	1-1/4	4-3/4	4-3/16	3	6	3-5/8	4-5/8	3-1/16
EJB241208	5	5	5	3-1/2	5	3-1/2	1-1/2	1-1/4	5-1/8	4-3/16	3	8-7/16	3-5/8	6	3-1/16
EJB241210	6	6	5	3-1/2	6	3-1/2	1-1/2	1-1/4	6-1/8	4-3/4	3	8-7/16	3-5/8	6	3-1/16
EJB241808	5	5	5	3-1/2	5	5	3-1/2	2-1/2	5-1/4	4-3/16	4-3/16	8-7/16	6	6	4-5/8
EJB241810	6	6	5	3-1/2	6	6	3-1/2	2-1/2	6-1/4	4-3/4	4-3/4	8-7/16	6	6	4-5/8
EJB242408	5	5	5	3-1/2	5	5	5	3-1/2	5-3/8	4-3/16	4-3/16	8-7/16	8-7/16	6	6
EJB242410	6	6	5	3-1/2	6	6	5	3-1/2	6-3/8	4-3/4	4-3/4	8-7/16	8-7/16	6	6
EJB361208	5	5	5	5	5	3-1/2	1-1/2	1-1/4	4-3/4	4-7/16	3	8-7/16	3-5/8	8-7/16	3-1/16
EJB361808	5	5	5	5	5	5	3-1/2	2-1/2	5-1/2	4-7/16	4-7/16	8-7/16	6	8-7/16	4-5/8
EJB361810	6	6	5	5	6	6	3-1/2	2-1/2	6-1/2	4-3/4	4-3/4	8-7/16	6	8-7/16	4-5/8
EJB362408	5	5	5	5	5	5	5	3-1/2	6	4-3/16	4-3/16	8-7/16	8-7/16	8-7/16	6

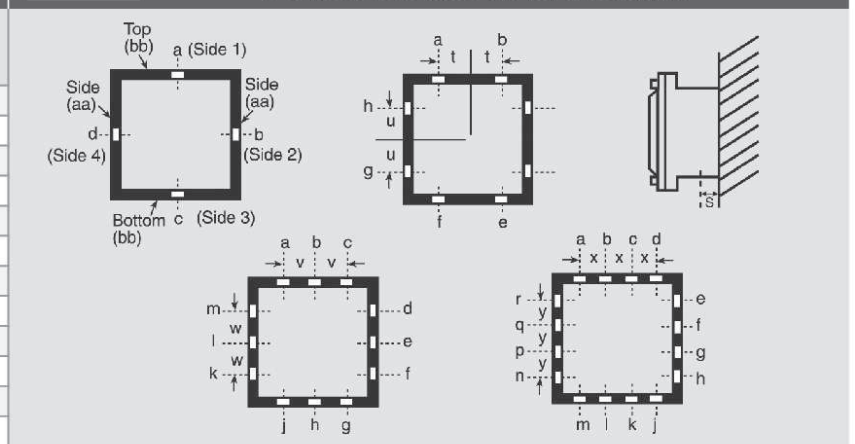
TABLE 3

SYMBOLS FOR OPENINGS

NPT Conduit Size	Drilled & Tapped Hole Symbol	Metric Openings	Drilled & Tapped Hole Symbol
1/2	A	M16	AM
3/4	B	M20	BM
1	C	M25	CM
1-1/4	E	M32	EM
1-1/2	F	M40	FM
2	G	M50	GM
2-1/2	H	M63	HM
3	J		
3-1/2	K		
4	L		
5	M		
6	N		

TABLE 4

CONDUIT ARRANGEMENT DIAGRAMS



Step 3

Based upon the EJB selected, use Section 3 of the order form and outline the maximum number of columns and rows available (from Table 1) beginning in the upper left corner. Fill in the length of each side in the space provided.

Note that the left side will be hinged unless otherwise specified in Section 2. In our example, an EJB161606 was selected and according to Table 1, a total of 36 device spaces are available (6 columns and 6 rows). See sample order form.

Step 4

Place the appropriate letter symbol from Section 1 of the order form in the position you desire the devices or openings to be located. If a window is required, outline the position and number of spaces the window will occupy and place the symbol of the window (w) in the center.

Note that 2 windows per enclosure can be used. If more windows are required contact factory. (See appropriate window information in the sample order form)

Globally Certified—Individually Customized

Step 5

Indicate the desired device marking (DSL legend plate) or engraved plate for each device or window in Section 4 of the order form.

Engraved plates will be located above the device or window and are white letters on a black background. If an engraved plate is desired, fill in desired wording on engraved plate (up to 2 lines) on Section 4 of order form. If a device marking is required on EMP device, insert the DSL catalog number from those listed below (Table 5) on Section 4 of order form under column labeled "Device Marking." Be sure to specify the row and column location of the EMP device being marked. See sample order form.

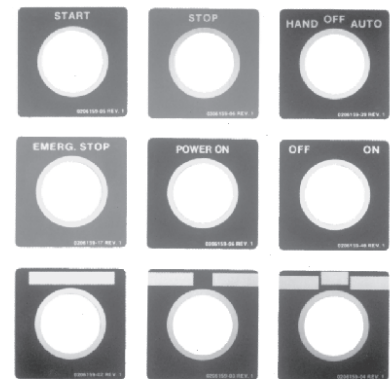
That's it. *It's that simple.* Now fax the order form to your local Cooper Crouse-Hinds Distributor.

TABLE 5

LEGEND PLATE SELECTOR CHART

Use the charts below to select the appropriate legend plate(s) for your application. Markings shown in **bold print** are etched; all others are stamped.

Single Function Legend Plates		Double Function Legend Plates		Triple Function Legend Plates									
Marking	Cat #.	Marking	Cat #.	Marking	Cat #.								
Automatic	DSL16	Blank with 2 fields	DSL03	Auto-Off-Hand	DSL49								
Blank	DSL01	For-Rev	DSL30	Blank with 3 fields	DSL04								
Blank with single field	DSL02	Hand-Auto	DSL29	Fast-Off-Slow	DSL41								
Close	DSL21	In-Out	DSL35	For-Off-Rev	DSL40								
Down	DSL23	Off-On	DSL48	Hand-Off-Auto	DSL39								
Emerg. Stop	DSL17	Open-Close	DSL32	Run-Off-Jog	DSL38								
Fast	DSL46	Raise-Lower	DSL36	Open-Off-Close	DSL43								
Forward	DSL18	Run-Jog	DSL28	Raise-Off-Lower	DSL87								
Hand	DSL15	Safe-Run	DSL86	Slow-Off-Fast	DSL88								
In	DSL24	Start-Stop	DSL37	Up-Off-Down	DSL44								
Jog	DSL10	Slow-Fast	DSL65	1-Off-2	DSL42								
Lower	DSL27	Up-Down	DSL33	Note: Background color for all legend plates is black with the following exceptions: <table border="1"> <thead> <tr> <th>Marking</th> <th>Plate Color</th> </tr> </thead> <tbody> <tr> <td>Start</td> <td>Green</td> </tr> <tr> <td>Stop</td> <td>Red</td> </tr> <tr> <td>Emerg. Stop</td> <td>Red</td> </tr> </tbody> </table>		Marking	Plate Color	Start	Green	Stop	Red	Emerg. Stop	Red
Marking	Plate Color												
Start	Green												
Stop	Red												
Emerg. Stop	Red												
On	DSL07												
Off	DSL08												
Open	DSL20												
Out	DSL25												
Power On	DSL14												
Raise	DSL26												
Reset	DSL12												
Reverse	DSL19												
Run	DSL09												
Safe	DSL85												
Slow	DSL47												
Start	DSL05												
Stop	DSL06												
Test	DSL13												
Trip	DSL11												
Up	DSL22												



Globally Certified—Individually Customized

Please photocopy and fax all pages of order form (Sections 1-4) to your local Cooper Crouse-Hinds Distributor.

Section 1: EMP Style Operators—UL, cULus and ATEX

Number of Devices: Indicate the Number of Devices, Openings Without Devices and Window(s) Required.

Pilot Lights			
	Diagram	Symbol	Quantity
EMP009-J1 (Red)		A	_____
EMP009-J1-LED		A1	_____
EMP0090-J1		A2	_____
EMP0098-J1		A4	_____
EMP009-J3 (Green)		B	_____
EMP009-J3-LED		B1	_____
EMP0090-J3		B2	_____
EMP0098-J3		B4	_____
EMP009-J6 (Amber)		C	_____
EMP009-J6-LED		C1	_____
EMP0090-J6		C2	_____
EMP0098-J6		C4	_____
EMP009-J10 (Clear)		E	_____
EMP0090-J10		E2	_____
EMP0098-J10		E4	_____
EMP009-J11 (Blue)		F	_____
EMP0090-J11		F2	_____
EMP0098-J11		F4	_____

Selector Switches – Two position			
	Diagram	Symbol	Quantity
EMP049		Q	_____
EMP059		R	_____

Selector Switches – Three position			
	Diagram	Symbol	Quantity
EMP069		S	_____
EMP069-S634		S4	_____
EMP069-S635		S5	_____
EMP079		T	_____
EMP079-S634		T4	_____
EMP079-S635		T5	_____
EMP089		U	_____
EMP089-S634		U4	_____
EMP089-S635		U5	_____

Pushbuttons—Single Pushbutton			
	Diagram	Symbol	Quantity
EMP019 (Black)		G	_____
EMP019 (Red)		H	_____
EMP019 (Green)		J	_____
EMP098 (Red)		K	_____

Selector Switches – Keyed Selector Switches			
	Diagram	Symbol	Qty
EMP0491		Q6	_____
EMP0492		Q7	_____
EMP0493		Q8	_____
EMP0591		R6	_____
EMP0592		R7	_____
EMP0593		R8	_____
EMP0691		S6	_____
EMP0692		S7	_____
EMP0693		S8	_____
EMP0694	S9	_____	
EMP0791		T6	_____
EMP0792		T7	_____
EMP0793		T8	_____
EMP0794		T9	_____
EMP0891		U6	_____
EMP0892		U7	_____
EMP0893		U8	_____
EMP0894		U9	_____

Pushbuttons—Double Pushbutton, Single Operator			
	Diagram	Symbol	Quantity
EMP029 (Black)		L	_____
EMP029 (Red)		M	_____
EMP029 (Green)		N	_____

Pushbuttons—Double Pushbutton, Double Operator			
	Diagram	Symbol	Quantity
EMP039		P	_____

Total Number of all Devices on this page _____



Globally Certified—Individually Customized

Section 1: EMP Style Operators Continued

Number of Devices: Indicate the Number of Devices, Openings Without Devices and Window(s) Required.

Openings Without Devices (For Future Expansion)	
	Symbol Quantity
3/4" - 14 NPSM Opening (plugged)	V _____

Windows			
	Symbol	Quantity	# of Openings
GUB0108	W	_____	_____

Total Number of all Device
Openings from previous page _____

Total Number of all Devices /
Openings from Section 1 _____

Applications:

EJB/EJW IEC ATEX Enclosures are used in threaded rigid conduit systems in hazardous areas:

- To function as a splice box, pull box, or equipment and device enclosure
- Indoors and outdoors

Features:

- Ground joint (bolted) construction throughout permits use in hazardous areas
- Bodies have thick walls so they can be factory drilled and tapped to meet IEC requirements for Zone 1, 2, 21, and 22 hazardous areas
- Covers are provided with a neoprene "O" ring gasket to meet NEMA/EEMAC 4 requirements for a watertight seal
- Internal grounding lug provides a means to ground enclosed equipment
- Ambient temperature range: -20 to +55°C
- Rated voltage: 690V
- Rated max. current: up to 1200A

Certifications & Compliances:

**ATEX Certificate: LOM
02ATEX3060U (Empty Enclosures)**

- Ⓢ II 2G Ex d IIB
- EN60079-0:2006
- EN60079-7:2007
- EN60079-18:2004

**ATEX Certificate: LOM
03ATEX2004X (Custom Control Panels)**

- Ⓢ II 2 G Ex d IIB T4...T6
- Ⓢ II 2(1) G Ex d[ia] IIB T4...T6
- Ⓢ II 2(2) G Ex d[ib] IIB T4...T6
- Ⓢ II 2(1/2) G Ex d[ja/ib] IIB T4...T6
- EN60079-0:2006
- EN60079-1:2007
- EN60079-11:2007

Metallic Enclosures*

Marking to 94/9/CE

- Ⓢ II 2 G - EEx d IIB T6 - T4 - T6*

EC - Type Examination Certificate

- LOM 02 ATEX 3060U

Degree of Protection

- IP65 acc. EN60529

Rated Voltage

- 690V

Max. Rated Current

- 1200A

Terminals

- to 240mm²

Material

- Light alloy, less EJW family in welded steel; grey coating

*Acc. of the mounted elements.



EJB 241 M1

Components

Marking to 94/9/CE

- Ⓢ II 2 G - EEx d IIB

EC - Type Examination Certificate

- LOM 02 ATEX 3060U

Degree of Protection

- IP65 acc. EN60529

Standard Materials:

- **Bodies** - aluminum
- **Covers** - aluminum
- **EJW Series** - welded steel

Standard Finish:

- Epoxy powder coat finish is standard inside and outside

Options:

Description	Suffix
• Factory installed mounting plate for relays, terminal blocks, electrical devices, etc.	Available upon request (please contact factory)
• Factory installed pushbuttons, signal lamps, switchgear, rotary handles, actuators, rectangular glass windows	Available upon request (please contact factory)
• Factory installed terminal blocks - up to 240 sq mm	Available upon request (please contact factory)

Ordering Information - Enclosures:

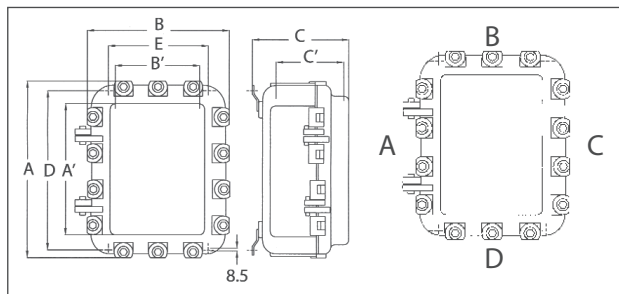
Type	Dissipation Power			Rated Current Max.	Cat. #	Kg	Quantity
	T6	T5	T4				
EJB 12R	30	60	100W	40A	NOR 000 001 170 438	3.00	1
EJB 12A	30	60	100W	40A	NOR 000 001 170 446	3.60	1
EJB 14R	80	140	240W	65A	NOR 000 001 170 462	8.30	1
EJB 23R	60	140	240W	100A	NOR 000 001 170 488	11.00	1
EJB 110	125	170	295W	160A	NOR 000 001 170 496	22.00	1
EJB 120	150	270	480W	300A	NOR 000 001 170 503	28.50	1
EJB 120 M3	150	270	480W	300A	NOR 000 111 170 601	28.50	1
EJB 120 M4	150	270	480W	300A	NOR 000 111 170 606	28.50	1
EJB 121	150	280	500W	350A	NOR 000 001 170 511	32.00	1
EJB 130	200	340	590W	450A	NOR 000 001 170 529	35.30	1
EJB 131	200	350	610W	500A	NOR 000 001 170 537	39.00	1
EJB 240	250	400	700W	800A	NOR 000 001 170 545	52.30	1
EJB 241	250	400	700W	850A	NOR 000 001 170 553	56.80	1
EJB 241 M1	250	400	700W	850A	NOR 000 111 170 469	54.00	1
EJB 241 M2	250	400	700W	850A	NOR 000 111 170 451	51.00	1
EJW 250	250	340	560W	1200A	NOR 000 001 190 139	145.00	1
EJW 251	380	520	850W	1200A	NOR 000 001 190 197	167.00	1
EJW 350	380	520	850W	1200A	NOR 000 001 190 171	168.00	1
EJW 351	450	600	1000W	1200A	NOR 000 111 190 062	175.00	1
EJW 561	600	730	1000W	1200A	NOR 000 111 190 066	380.00	1

Ordering Information - Components:

Description	Cat. #	Quantity
Pushbuttons with 1NO + 1NC contact block:		
 Sensitive pushbutton + labels «White», «I», «0», «STOP», «START»	NOR 000 001 170 004	1
 Sensitive pushbutton locked by padlock in pressed position + labels «White», «I», «0», «STOP», «START»	NOR 000 001 170 005	1
 Sensitive pushbutton locked by padlock in depressed position + labels «White», «I», «0», «STOP», «START»	NOR 000 001 170 006	1
 Mushroom sensitive pushbutton + labels «0», «STOP», «OFF», «RED», and «YELLOW»	NOR 000 001 170 007	1
 Mushroom retained pushbutton + labels «0», «STOP», «OFF», «RED», and «YELLOW»	NOR 000 001 170 008	1
 Mushroom retained pushbutton and locked by padlock + labels «0», «STOP», «OFF», «RED», and «YELLOW»	NOR 000 001 170 009	1
 Key pushbutton	NOR 000 001 170 010	1
 Mushroom key pushbutton	NOR 000 001 170 011	1
 Sensitive pushbutton bottom box + label «RESET»	NOR 000 001 170 012	1
Contact blocks:		
1NO	NOR 000 001 170 013	1
1NC	NOR 000 001 170 014	1
Pack labels:		
1 label of each inscription «I», «Arrow», «ON», «RESET», «TEST», «Green», «Red», «Yellow», and «Black»	NOR 000 001 170 015	1
Signal lamps:		
 Direct lamp 240V + lens «White», «Amber», «Red», «Yellow», and «Green» + Lampholder + 3W lamp	NOR 000 001 170 016	1
Direct lamp 130V + lens «White», «Amber», «Red», «Yellow», and «Green» + Lampholder + 2.6W lamp	NOR 000 001 170 017	1
Direct lamp 24V + lens «White», «Amber», «Red», «Yellow», and «Green» + Lampholder + 1.2W lamp	NOR 000 001 170 018	1
 Indirect lamp by Trafo 380-400/6V + lens «White», «Amber», «Red», «Yellow», and «Green» + Lampholder + 1.2W lamp	NOR 000 001 170 019	1
Direct LED 230V + lens «White», «Amber», «Red», «Yellow», and «Green» + Lampholder	NOR 000 001 170 116	1
Direct LED 130V + lens «White», «Amber», «Red», «Yellow», and «Green» + Lampholder	NOR 000 001 170 117	1
Direct LED 24V + lens «White», «Amber», «Red», «Yellow», and «Green» + Lampholder	NOR 000 001 170 118	1
Control switches, locked by padlock + label:		
Reversed «0-1», 2P, 12A + rotary handle	NOR 000 001 170 020	1
Reversed «0-1», 2P, 25A + rotary handle	NOR 000 001 170 021	1
Reversed «0-1», 3P, 25A + rotary handle	NOR 000 001 170 022	1
Reversed «1-2», 1P, 12A + rotary handle	NOR 000 001 170 023	1
Reversed «1-2», 2P, 12A + rotary handle	NOR 000 001 170 024	1
Reversed «1-0-2», 1P, 12A + rotary handle	NOR 000 001 170 025	1

Description	Cat. #	Quantity
Control switches, locked by padlock + label:		
Reversed «1-0-2», 2P, 12A + rotary handle	NOR 000 001 170 026	1
Reversed «0-1», 2P, 12A + rotary handle	NOR 000 001 170 027	1
Reversed «0-1-M», 2P, 12A + rotary handle	NOR 000 001 170 028	1
Rotary handle bottom enclosure locked by padlock:		
Actuator for 25A <63A switch	NOR 000 001 170 029	1
Actuator for 63A <100A switch	NOR 000 001 170 030	1
Actuator for 100A <250A switch	NOR 000 001 170 031	1
Actuator for 250A <1000A switch	NOR 000 001 170 032	1
Neutral label for switches:		
Label 60 x 60	NOR 000 001 170 033	1
Label 70 x 70	NOR 000 001 170 034	1
Label 85 x 85	NOR 000 001 170 035	1
Special actuators:		
Actuator for MCB of 1P - ABB + label	NOR 000 001 170 933	1
Actuator for MCB multi-pole - ABB + label	NOR 000 001 170 925	1
Actuator for MCB of 1P - M&G + label	NOR 000 111 170 600	1
Actuator for MCB multi-pole - M&G + label	NOR 000 111 170 569	1
Actuator for MCB POWER + label	NOR 000 111 170 565	1
Bushings†:		
3/4" NPT 3P + N + PE 4x10mm ² + 1x6mm ² 50A	NOR 000 001 170 892	1
1" NPT 3P + N + PE 4x16mm ² + 1x10mm ² 75A	NOR 000 001 170 909	1
1 1/2" NPT 3P + N + PE x50mm ² + 1x10mm ² 150A	NOR 000 001 170 917	1
Bus-bars:		
>350A, 3P + N + T + control 19x1.5mm ² application size 1	NOR 000 001 170 036	1
>350A <500A, 3P + N + T + control 19x1.5mm ² application size 1	NOR 000 001 170 037	1
>500A <630A, 3P (2 bars per phase) + N + T + control 19x1.5mm ² application size 2	NOR 000 001 170 038	1
>630A <800A, 3P (2 bars per phase) + N + T + control 19x1.5mm ² application size 2	NOR 000 001 170 039	1
Windows:		
60 x 60mm type: M 6060	NOR 000 001 170 000	1
75 x 75mm type: M 7575	NOR 000 001 170 001	1
110 x 50mm type: M 11050	NOR 000 001 170 002	1
110 x 75mm type: M 11075	NOR 000 001 170 003	1
End bars cover:		
	NOR 000 111 170 154	1

†Length cables 1m; others upon request.



Dimensions In Millimeters:

Type	Externals			Windows	Internals			Mounting	
	A	B	C		A'	B'	C'	D	E
EJB 12R	216	130	106		178	86	59	220	144
EJB 12A	216	130	162		178	86	115	220	144
EJB 14R	420	150	143		367	104	95	424	159
EJB 23R	337	217	211		274	164	166	333	219
EJB 110	371	371	233		311	311	179	327	327
EJB 120	474	371	233		414	311	177	430	327
EJB 120 M3	474	371	233	75 x 110	414	311	177	430	327
EJB 120 M4	474	371	233	180 x 140	414	311	177	430	327
EJB 121	474	371	305		414	311	249	430	327
EJB 130	577	371	233		517	311	177	533	327
EJB 131	577	371	305		517	311	249	533	327
EJB 240	680	474	233		619	414	175	636	430
EJB 241	680	474	305		619	414	247	636	430
EJB 241 M1	680	474	305	230 x 255	619	414	247	636	430
EJB 241 M2	680	474	305	465 x 255	619	414	247	636	430
EJW 250	890	474	280		816	351	200	852	387
EJW 251	890	457	512		816	351	370	852	387
EJW 350	890	572	396		816	466	254	852	502
EJW 351	890	572	512		816	466	370	852	502
EJW 561	1280	806	512		1194	685	370	1236	727

Customized Electrical Equipment

EJB/EJW IEC ATEX Enclosures can be customized to meet individual requirements. Please contact Cooper Crouse-Hinds Customer Service for more information.

Possible electrical components mounted inside EJ's:

- Bus-bars; terminals; low voltage transformers; air circuit breakers; automatic circuit breakers; control and operation circuits; electronic apparatus; heating elements; associated SI apparatus; batteries with volume $< 1/100$ of the free enclosure volume; starters and ballast for discharge lamps; capacitors of 3 seconds discharge time; servomotors without ventilation

Marking to 94/9/CE

-  II 2 G - Ex d IIB T6 - T4 - T6

EC - Type Examination Certificate

- LOM 03 ATEX 2004X

T (Ambient of Use)

- -20°C to +55°C

Rated Voltage

- 690V

Rated Current

- up to 1200A

Degree of Protection

- IP65 acc. EN60529

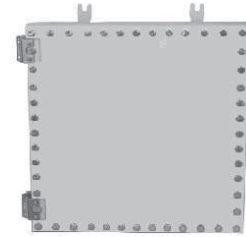
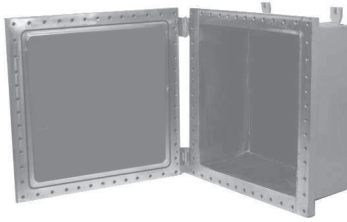
Terminals

- Up to 240mm²



Applications:

- EJBA enclosures are used:
 - As a terminal box or bus bar system
 - As junction boxes with terminals
 - To enclose equipment and control devices, relays, contactors and/or instruments
 - To house custom-built panels



Features:

- External flange with machined joint cover opening provides maximum opening for pulling cables or mounting equipment
- Body walls have sufficient thickness to allow for drilled and tapped entries
- Special one piece hollow neoprene gasket designed to fully compress to ensure metal to metal contact of cover and body for explosionproof integrity while giving an IP66 weatherproof seal to AS1939
- The sealing gasket is placed inward from the cover bolt holes, to prevent ingress of any moisture
- Hinges provide convenient and easy access for inspection, maintenance, and systems changes; integral cast hinges are fitted as standard on EJBA464, EJBA783, and EJBA786; aluminum hinges are also provided as standard on EJBA211710 up to EJBA361810; optional stainless steel hinges are available for sizes EJBA886 up to EJBA161608
- Entries can be drilled and tapped to customer requirements

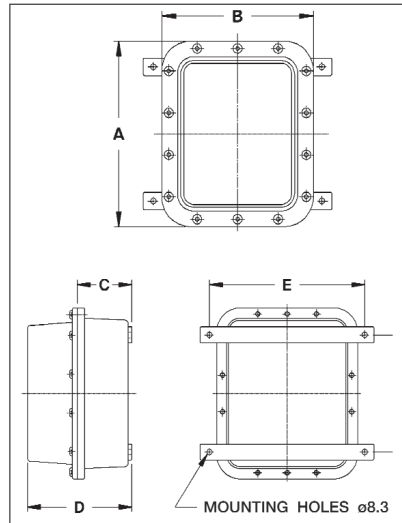
Ordering Information:

Nominal inside dimensions (mm):

Cat. #	Width	Height	Depth	Gas Group	Mounting Plate
EJBA464	150	100	100	IIB	MP0406
EJBA783	200	170	70	IIB or IIC (H2)	MP0708
EJBA786	200	170	140	IIB or IIC (H2)	MP0708
EJBA886	200	200	150	IIB or IIC (H2)	MP0808
EJBA1286	200	300	150	IIB or IIC (H2)	MP1208
EJBA9166	228	400	150	IIB or IIC (H2)	MP0916
EJBA121208	300	300	200	IIB or IIC (H2)	MP1212
EJBA161608	400	400	200	IIB or IIC (H2)	MP1616
EJBA211710	440	545	255	IIB or IIC (H2)	MP2117
EJBA241810	450	600	255	IIB or IIC (H2)	MP2418
EJBA242410	600	600	255	IIB or IIC (H2)	MP2424

Note: All drilling and tapping of entries must be carried out by the manufacturer to ensure that certification requirements are not breached. While mounting of devices such as relays, etc. can be carried out in the future if the enclosure is provided with a mounting plate, care should be taken with devices which are likely to raise the surface temperature of the enclosure.

Dimensions In Millimeters:



Certifications and Compliances:

Type of Protection

- Exd

Degree of Protection

- IP66

Gas Group

- IIB or IIB + H2

Approvals

- ANZEx 06.3018X

Standard Materials:

- Body and cover - cast copper-free aluminum

Standard Finish:

- EJBA2424, 2418, 211710 cover corrosion resistant grey polyurethane; remainder natural

Options:

- Grey polyurethane finish
- Captive cover screws
- Marine grade paint

Dimensional Data:

Cat. #	A	B	C	D	E	F	Mtg. Screws
EJBA464	215	165	122	135	145	150	M6
EJBA783	280	240	87	115	230	192	M8
EJBA786	280	240	87	170	230	192	M8
EJBA886	280	280	180	230	140	280	M8
EJBA1286	280	380	175	225	168	305	M12
EJBA9166	305	485	175	225	242	325	M12
EJBA121208	415	415	230	285	143	395	M6
EJBA161608	516	516	230	285	242	505	M8
EJBA211710	654	545	323	355	300	610	M8
EJBA241810	595	750	295	350	413	556	M8
EJBA242410	750	750	295	350	413	708	M12