

Applications:

GUB instrument housings are used:

- To enclose ammeters, voltmeters, wattmeters, varimeters, power-factor meters, tachometer indicators, pressure controls, temperature control etc., in a threaded rigid metallic conduit system
- In specific hazardous atmospheres such as encountered in oil refineries, chemical plants, paint and varnish manufacturing plants, certain hazardous metal finishing areas, coal processing locations, granaries and grain processing plants

Features:

- Threaded covers have glass windows for viewing scale, dial or setting of enclosed instrument.
- Mounting plates, brackets or pillars for mounting a wide variety of instruments not shown on the next page are available on special order. Instrument to be used must be specified by make, complete identification data and dimensions.

Certifications and Compliances:

- NEC/CEC:
 - Class I, Division 1 & 2, Group D
 - Class II, Division 1, Groups E, F, G
 - Class II, Division 2, Groups F, G
 - Class III
- NEMA/EEMAC: 3, 7D, 9EFG, 12
- UL Standard: 1203
- CSA Standard: C22.2 No. 30

Standard Materials:

- Body – *Feraloy*® iron alloy
- Cover – copper-free aluminum
- Window – heat strengthened plate glass

Standard Finishes:

- Feraloy* iron alloy – electrogalvanized and aluminum acrylic paint
- Copper-free aluminum – natural

Options:

Description

Other conduit opening sizes and arrangements can be furnished

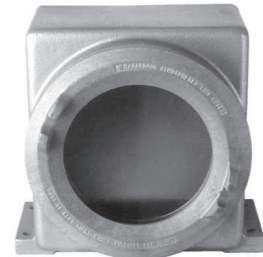
For 3/4" hub top and bottom

Suffix

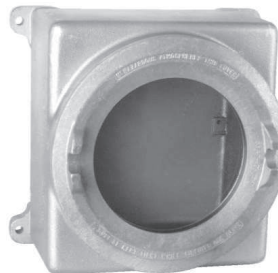
22



GUB01 shown with GUB0110 glass cover



GUB04 shown with GUB0109 glass cover



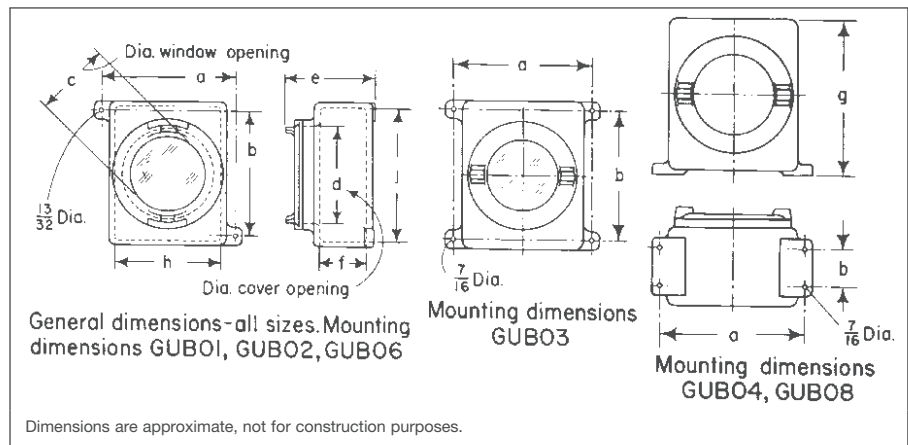
GUB03 shown with GUB0109 glass cover

Ordering Information - Empty Housing

Basic Housing	Conduit Opening		Cat. #
	Size	Position	
GUB01	3/4	Top	GUB110 1 20
		Bottom	GUB110 1 02
GUB02	3/4	Top	GUB218 1 20
		Bottom	GUB218 1 02
GUB06	3/4	Top	GUB619 1 20
		Bottom	GUB619 1 02
GUB03	3/4	Top	GUB319 1 20
		Bottom	GUB319 1 02

Dimensions

In Inches:



GUB	a	b	c	d	e	f	g	h	j
1	7 1/2	5 3/4	3 5/8	5 1/2	5 3/4	3		5 5/8	6 1/2
2	9	8 3/4	4 3/4	7	6	3		7 1/8	9 1/8
3	12 1/8	10 3/4	6 13/16	9 5/8	8 5/16	5		9 3/4	10 3/4
4	12 1/8	3 1/2	6 13/16	9 5/8	8 13/16	5	12 1/4	9 3/4	10 3/4
6	9 1/2	8 3/4	4 3/4	7	7	4		7 5/8	9 1/8
8	9 5/8	2 1/2	4 3/4	7	6 15/16	4	10 1/4	7 5/8	9 1/8

Cl. I, Div. 1 & 2, Group D
 Cl. II, Div. 1, Groups E, F, G
 Cl. II, Div. 2, Groups F, G
 Class III
 NEMA 3, 7D, 9EFG, 12

Explosionproof
 Dust-Ignitionproof
 Raintight/Wet Locations
 Watertight

Ordering Information - Housing with Mounting Plate for Standard Meters

Inst. Size	Basic Housing	Cat. #
3½	GUB01	GUB1103 1 20* GUB11031 1 20
4	GUB06	GUB6191 1 20 GUB6192 1 20 GUB6193 1 20
4½	GUB02	GUB2184 1 20*
6	GUB03	GUB3190 1 20* GUB3191 1 20

*These boxes available for use in Class I, Division 1 and 2, Group B and C hazardous areas. Add suffix GB to Cat. No. Seals must be installed within 1½" of each conduit opening for Group B & C usages.

Note: These standard instrument housings are furnished with one top feed ¾" drilled and tapped opening.

Note: Meters are not included.

Ordering Information - Housing with Standard Meter Included†

Manufacturer	Model	Inst. Size in.	Type Flange	Cat. #	Max. Inst. Depth‡
G.E.	Type 250	3½	Rect. Flush	GUB1103 1 20*	
Westinghouse	R-351 Series N-351 Series	3½ 3½	Rect. Flush Round Flush		
Weston	301 Series 301 Series 723	3½ 3½ 3½	Rect. Flush Round Flush Rect. Flush		
G.E.	KT-11 Elapsed Time Meter Without Reset 236 Elapsed Time Meter Without Reset	3½ 3½	Round Flush or Rect.Flush Round Flush or Rect.Flush	GUB11031 1 20	
Westinghouse	BH351 Elapsed Time Meter Without Reset	3½	Rect. Flush		
G.E.	Type 250	4½	Rect. Flush	GUB2184 1 20*	
Westinghouse	R-371 Series N-371 Series	4½ 4½	Rect. Flush Round Flush		
Weston	1900 Series	4½	Rect. Flush		
Westinghouse	KX-251 KA-251 KY-25	6 6 6	Rect. Rect. Rect.	GUB3190 1 20*	
Weston	271 273	7 9	Fan Fan	GUB3191 1 20	
G.E.	AB-14 Series DB-14 Series AB-18 Series DB-18 Series AB-30 Series DB-30 Series AB-40 Series DB-40 Series	4 4 4 4 4 4 4 4	Rect. Flush Rect. Flush Rect. Flush Rect. Flush Rect. Flush Rect. Flush Rect. Flush Rect. Flush	GUB6191 1 20 GUB6192 1 20 GUB6193 1 20	4 ⁹ / ₁₆ 6 ¹ / ₁₆ 7 ¹¹ / ₁₆
Westinghouse	K-241 Series	4½	Rect. Flush		

†Standard meters are to be purchased separately from manufacturers listed.

‡Select housing based on depth of instrument to be enclosed.

*These boxes available for use in Class I, Division 1 and 2, Group B and C hazardous areas. Add suffix GB to Cat. No. Seals must be installed within 1½" of each conduit opening for Group B & C usages.

Applications:

GUBA instrument housings are used:

- To enclose ammeters, voltmeters, wattmeters, varimeters, power-factor meters, tachometer, or other indicating devices
- In specific hazardous atmospheres such as encountered in oil refineries, chemical plants, paint and varnish manufacturing plants

Features:

- Threaded covers have glass windows for viewing scale, dial, or setting of enclosed instrument
- Mounting plates, brackets, or pillars for mounting a wide variety of instruments are available

Certifications & Compliances:

- Certificate of Compliance No. Ex262 to AS2480
- IP66 to AS1939

Standard Materials:

- Body - copper-free aluminum
- Cover - copper-free aluminum
- Window - toughened

Standard Finish:

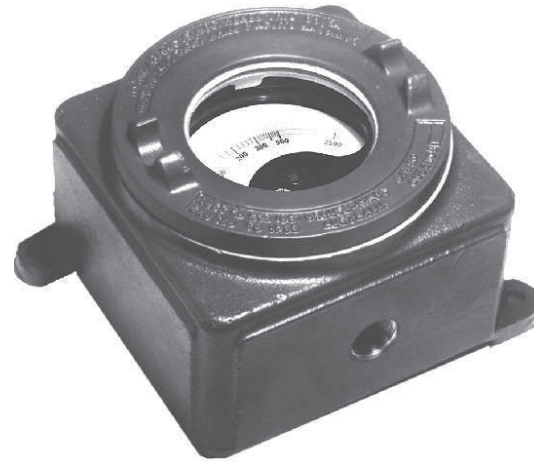
- Light grey corrosion resistant polyurethane

Options:

- Other conduit hub sizes and arrangements can be furnished
- Meter - 90° quadrant or 250° long scale

Notes:

- 1) Accommodates any make of meter styles 96Q or 96L
- 2) Instrument to be used must be specified by make, complete identification data, and dimensions

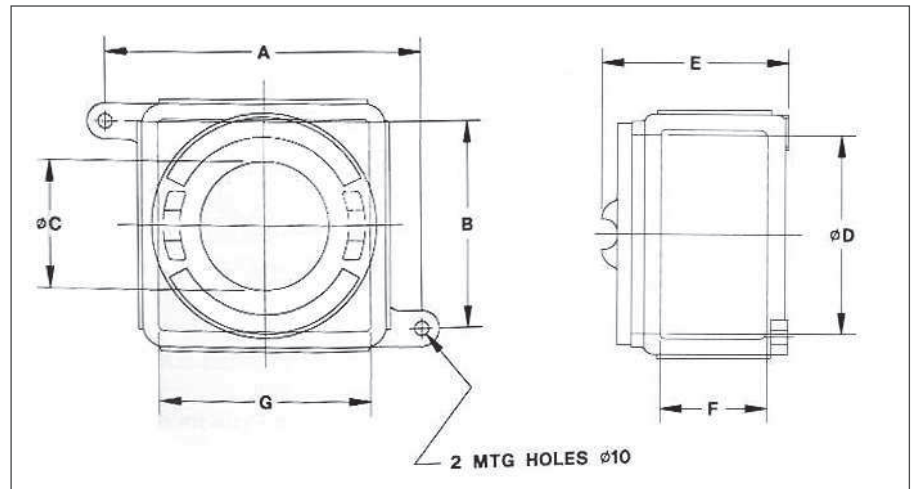


Ordering Information:

Basic Housing	Entry Size	Position	Cat. #
GUBA01	25mm	Top	GUBA 1103-1-20
GUBA01	25mm	Bottom	GUBA 1103-1-02

Dimensions

In Millimeters:



A	B	C	D	E	F	G
195	145	93	140	135	77	145

Cl. I, Div. 1 & 2, Group D
 Cl. II, Div. 1, Groups E, F, G
 Cl. II, Div. 2, Groups F, G
 Cl. III
 NEMA 3, 7D, 9EFG, 12

Explosionproof
 Dust-Ignitionproof
 Raintight
 Wet Locations

Applications:

EMH instrument housings are used:

- To enclose 2½" or 3½" diameter round, flush rim-mounting meters, whose scale or dial would be visible in the 2½" diameter glass window. Typical types of instruments or meters are ammeters, voltmeters, etc.
- In specific hazardous atmospheres such as encountered in oil refineries, chemical plants, paint and varnish manufacturing plants, certain hazardous metal finishing areas, coal processing locations, granaries and grain processing plants

Features:

- Sight-glass in cover permits viewing of instrument dial or setting.
- Enclosures are non-magnetic, available in surface mounting and flush panel mounting. The cylindrical extension of the cover opening on the flush bodies will project through a hole in panel. Thickness of panel must not exceed ¼" to insure flamtight assembly of cover threads with body threads.
- Mounting plates and posts in bodies support the instrument close to the heavy glass window in cover. Maximum depth of instrument extending from outboard end of posts towards the back wall of enclosure body is 3". There is ample wiring space in back of instruments.
- Bodies have bosses on all four sides and back for drilling and tapping of conduit entrances.
- Dead end and through feed arrangements for ¾" rigid conduit are standard listings.

Certifications and Compliances:

- NEC/CEC:
 - Class I, Division 1 & 2, Group D
 - Class II, Division 1, Groups E, F, G
 - Class II, Division 2, Groups F, G
 - Class III
- NEMA/EEMAC: 3, 7D, 9EFG, 12
- UL Standard: 886
- CSA Standard: C22.2 No. 30

Standard Materials:

- Bodies – copper-free aluminum
- Covers – copper-free aluminum
- Windows – heat strengthened plate glass

Standard Finishes:

- Natural

Instrument Housings

Style	Conduit Openings	Size	Cat. #
Surface	One in Side (Dead End)	¾"	EMH521 20000
	Two in Sides (Through Feed)		EMH533 20000
			EMH521 20200
			EMH533 20200
Flush	One in Side (Dead End)	¾"	EMH511 20000
	Two in Sides (Through Feed)		EMH534 20000
			EMH511 20200
			EMH534 20200

Standard Meters

Housed in EMH511, EMH521†

Manufacturer	Model	Size
Weston	201 Series	2½"
	301 Series	3½"
Westinghouse	N-351 Series	3½"
	125 Series	2½"
	135 Series	
	145 Series	
	155 Series	
Simpson	25 Series	3½"
	35 Series	
	45 Series	
	55 Series	2½"
	75 Series	
	3222 Series	
	3282 Series	2½"
	3223 Series	3½"
	3283 Series	

†Type-Round Flush

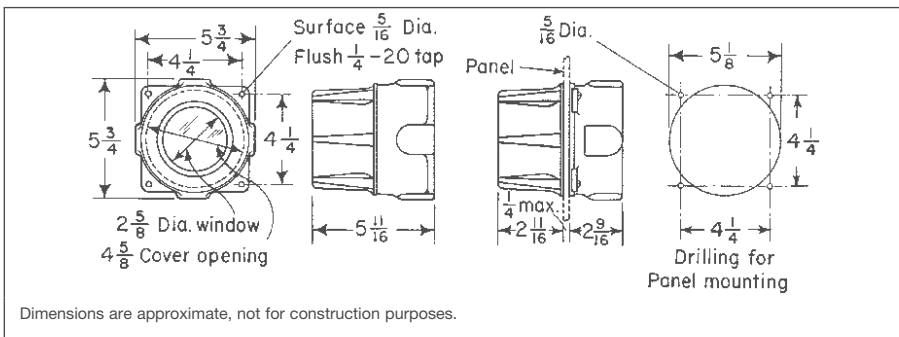
Standard Meters

Housed in EMH533, EMH534

Manufacturer	Model	Size	Type
G.E.	AW-91 Series	2½"	Rect. Flush
	DW-91 Series		
Weston	201 Series	2½"	Square Flush
	1721 Series		Rect. Flush

Dimensions

In Inches:



Flush



Surface

Options:

- Other conduit hub sizes and arrangements can be furnished.

Increased Safety Hazardous Applications or Non-hazardous Applications

Description	Page No.
Ex-CELL Series	see pages 726–732
NXT Series	see pages 735–737
STB Series	see pages 740–744
HVB Series	see pages 746–748
KBX Series	see page 749
TBX Series	see pages 750–752