

# Champ PVML uplight LED lighting for heavy industrial areas

## Rugged solutions for complex environments.

Champ PVML LED luminaires are now available with an uplight refractor which maximizes light dispersion. The new refractor is perfect for low bay ceilings, suspended pendant mounts, areas with elevated infrastructure or areas which require dispersed side and uplight illumination.

Model	Nominal lumens*	Watts	Efficacy	Equivalent HID
PVML-3	3,250	26	123 lm/W	70W
PVML-5	5,537	43	127 lm/W	100W
PVML-7	7,442	59	127 lm/W	175W
PVML-9	9,234	73	126 lm/W	250W
PVML-11	11,114	91	122 lm/W	320W
PVML-13	13,100	95	122 lm/W	400W

\*Nominal lumens based on Type V optics, 5000K CCT with clear glass lens. Wattage measured at 120 VAC. Uplight refractor reduces downlight ~10%.

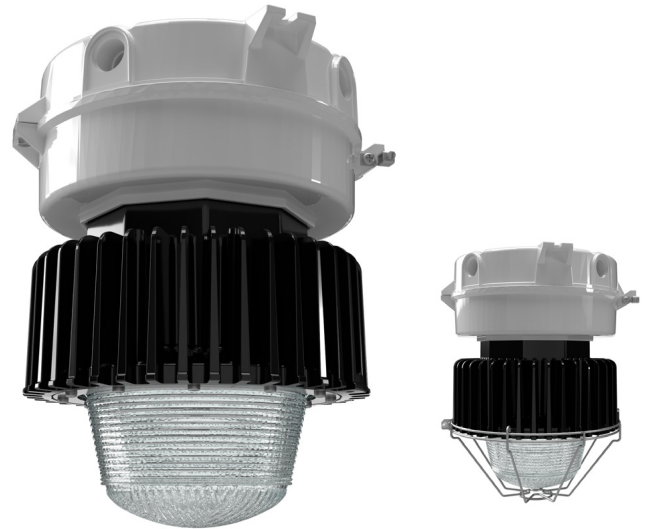
### Applications:

- Non-hazardous locations with mounting heights up to 30 feet
- Heavy industrial, mine site processing areas, platforms, loading docks, tunnels, indoor/outdoor spotlighting, outdoor wall, stanchion mounted general area lighting and areas requiring frequent on-and-off of lights
- Locations requiring continuous and consistent light levels in extreme ambient temperatures
- Where extremely corrosive, wet, dusty, hot and/or cold conditions exist
- Type 4X, marine, wet locations and hose down environments

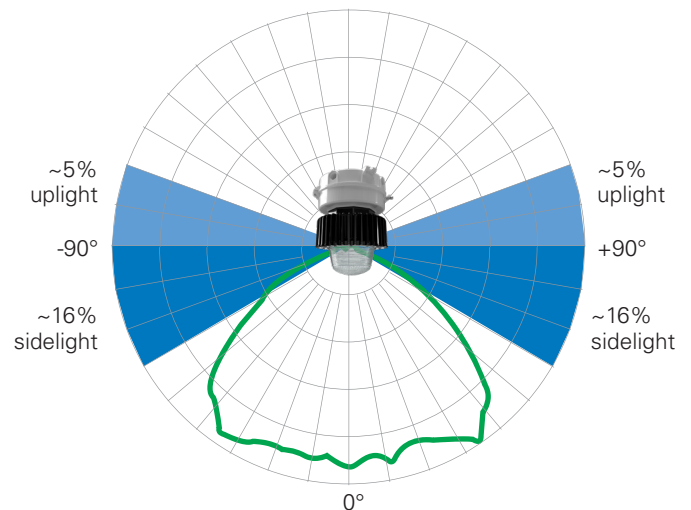
### Champ PVML benefits:

- Instant illumination and restrike; cold temperature operation / no warm-up required
- Option for redundancy in drivers with multiple series circuits connected to each driver to avoid complete loss of illumination
- Easy installation - compact modular fixture attaches onto existing Champ mounting module
- Energy-efficient technology - up to 77% energy savings over HID fixtures
- Contains no mercury or other hazardous substances
- Shock- and vibration-resistant solid-state luminaires have no filaments or glass components that could break - greatly reduces the risk of premature failure
- Operating ambient: -40°C to 65°C
- Up to 60,000 hours lifetime at 55°C
- 5 year fixture warranty†

†Refer to page 2 of the authorized distributor price book for Crouse-Hinds standard Terms and Conditions.



Refractor directs light to sides and above fixture



### Uplight refractor lens benefits:

- ~5% uplight and ~16% sidelight for better visibility
- High impact resistance – meets or exceeds 4 joule impact testing



Powering Business Worldwide

# Ordering information

Part number example: **PVML-3-N-2A-G-UNV1-S831-UPLT**

Champ PVML, 3,000 lumens, 4000K neutral white, ¾" pendant mount, Type V optics, wire guard, 100-277 VAC driver, safety cable, upright refractor lens

## PVML - 3 - N - 2A - G - UNV1 - S831 - UPLT

<b>Light source/intensity</b> <b>3</b> 3,250 nominal lumens <b>5</b> 5,537 nominal lumens <b>7</b> 7,442 nominal lumens <b>9</b> 9,234 nominal lumens <b>11</b> 11,114 nominal lumens <b>13</b> 13,100 nominal lumens <b>A</b> Amber - 5,200 lumens <b>G</b> Green - 4,300 lumens		<b>Lens guard</b> <b>BLANK</b> No guard <b>G</b> Wire guard		<b>Accessories &amp; options†</b> <b>S812</b> Trunnion mount kit with pin (available with ceiling mount only) <b>S831</b> Safety cable <b>S890</b> Quick clip <b>S892*</b> Redundant driver <b>TB6**</b> Six-pole terminal block	
<b>Color temperature</b> <b>BLANK</b> 5000K, 70 CRI (cool white) <b>N*</b> 4000K, 70 CRI (neutral white) <b>W</b> 3000K, 80 CRI (warm white)		<b>Optics</b> <b>BLANK</b> Type V optic standard <b>R1</b> Type I optic (all mounts minus ceiling) <b>R1A*</b> Type I optic (ceiling with conduit 45° counterclockwise from top hat hinge) <b>R1B*</b> Type I optic (ceiling with conduit 135° clockwise from top hat hinge) <b>R3</b> Type III optic (all mounts minus ceiling) <b>R3AP*</b> Type III optic (select when using Appleton® top hat adapter with Champ fixture) <b>R3A1*</b> Type III optic (ceiling with conduit 45° counterclockwise from top hat hinge) <b>R3A2*</b> Type III optic (ceiling with conduit 135° clockwise from top hat hinge) <b>R3B1*</b> Type III optic (ceiling with conduit 45° clockwise from top hat hinge) <b>R3B2*</b> Type III optic (ceiling with conduit 135° counterclockwise from top hat hinge)		<b>Voltage†</b> <b>UNV1</b> 100-277 VAC, 50/60 Hz; 127-250 VDC <b>UNV34</b> 347-480 VAC, 50/60 Hz †IEC voltage; 100-240 VAC at 50/60 Hz.	
<b>Mounting</b> <b>BLANK</b> No mounting module <b>J</b> 1-½" stanchion, 25° angled <b>P</b> 1-½" stanchion, straight <b>2A</b> ¾" pendant <b>3A</b> 1" pendant <b>20A</b> 20mm pendant <b>25A</b> 25mm pendant <b>2B</b> ¾" cone pendant <b>3B</b> 1" cone pendant <b>2HA</b> ¾" flexible pendant <b>2C</b> ¾" ceiling <b>3C</b> 1" ceiling <b>20C</b> 20mm ceiling <b>25C</b> 25mm ceiling <b>2TW</b> ¾" wall <b>3TW</b> 1" wall <b>20TW</b> 20mm wall <b>25TW</b> 25mm wall		<b>Lens material</b> <b>BLANK</b> Clear glass <b>S891</b> Diffused glass <b>S896*</b> Teflon coated lens <b>S903</b> Polycarbonate <b>UPLT**</b> Uplight refractor lens		†Ordered with fixture or available separately. *Available for VMVL7, 9 and 11 only **For NEC/CEC only.	

\*Consult factory for lead time.  
 \*\*5700K and 6500K are available upon request; consult factory.  
 \*\*\*Not available for Amber or Green LED.

\*Available with ceiling mount modules only.

\*For NEC/CEC only.  
 \*\*Recommended for use with Type V optic

### Accessories (ordered separately)

Replacement driver kits	
<b>VMVL-3-5-7L-UNV1-DRIVER-KIT</b>	UNV1 replacement driver kit for VMVL-3, -5 and -7
<b>VMVL-9-11L-UNV1-DRIVER-KIT</b>	UNV1 replacement driver kit for VMVL-9 and -11
<b>VMVL-96W-13L-UNV1-M2-DRIVER-REPL-KIT</b>	UNV1 replacement driver kit for VMVL-13
<b>VMVL-3L-5L-UNV34-DRIVER-KIT</b>	UNV34 replacement driver kit for VMVL-3 and -5
<b>VMVL-7L-UNV34-DRIVER-KIT</b>	UNV34 replacement driver kit for VMVL-7
<b>VMVL-9L-UNV34-DRIVER-KIT</b>	UNV34 replacement driver kit for VMVL-9
<b>VMVL-11L-UNV34-DRIVER-KIT</b>	UNV34 replacement driver kit for VMVL-11
<b>VMVL-13-M2-DRIVER-KIT</b>	UNV34 replacement driver kit for VMVL-13
<b>VMVL-7L-S892-UNV1-DRIVER-KIT</b>	UNV1 replacement redundant driver kit for VMVL-7
<b>VMVL-9L-11L-S892-UNV1-DRIVER-KIT</b>	UNV1 replacement redundant driver kit for VMVL-9 and 11
<b>VMVL-13-UNV1-S892-M2-DRIVER-KIT</b>	UNV1 replacement redundant driver kit for VMVL-13
<b>VMVL-7L-S892-UNV34-DRIVER-KIT</b>	UNV34 replacement redundant driver kit for VMVL-7
<b>VMVL-9L-S892-UNV34-DRIVER-KIT</b>	UNV34 replacement redundant driver kit for VMVL-9
<b>VMVL-11L-S892-UNV34-DRIVER-KIT</b>	UNV34 replacement redundant driver kit for VMVL-11
<b>VMVL-13-UNV34-S892-M2-DRIVER-KIT</b>	UNV34 replacement redundant driver kit for VMVL-13
<b>VMVL-AL-GL-UNV1-DRIVER-KIT</b>	UNV1 replacement driver kit for amber or green models

Mounting & hardware	
<b>VMVL S812 K1</b>	Trunnion mount kit with pin*
<b>VMVL S812 K1 DBR</b>	PVC coated trunnion mount kit with pin*
<b>VMVL S831 K1</b>	Safety cable
<b>VMVL S890 K1</b>	Quick Clip

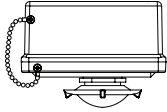
\*Available with ceiling mounted modules only.

Mounting adapters	
<b>CHMM1</b>	Mounting adapter for Appleton MercMaster III mounts
<b>CHMM2</b>	Mounting adapter for MercMaster II mounts
<b>CHMM3</b>	Mounting adapter for Thomas & Betts HazLux mounts
<b>CHMM4</b>	Mounting adapter for GE H2 Filtr-Gard mounts

Refractor kit	
<b>PVML-UPLT-KIT</b>	Uplight refractor lens

Photocells		Lens guard	
<b>D2S20</b>	Photocell, 120V	<b>P3001</b>	Wire guard
<b>D2S208 277</b>	Photocell, 208-277V	<b>P3003</b>	UPLT wire guard

# Occupancy sensor



## Occupancy sensors

**ORDC/UNV1** 3/4" NPT entry, 100-277 VAC

### Occupancy sensor accessories (ordered separately)

<b>CABLE KIT ORD 1</b>	TECK armored cable (5 ft) with TECK glands (3/4")
<b>CABLE KIT ORD 2</b>	P Type non armored cable (5 ft) with ADE1F glands (3/4")
<b>CABLE KIT ORD 3</b>	Metal-clad armored cable (5 ft) with TMC glands (3/4")
<b>CABLE KIT ORD 4</b>	SO cable (5 ft) with ADE1F glands (3/4")
<b>ORDC WKIT</b>	Wall mount kit
<b>ORDC PKIT</b>	Pendant mount kit
<b>ORDC SKIT</b>	Stanchion mount kit
<b>REMOTE CONTROL 1</b>	Remote control for programming sensor

### Certifications and compliances:

- DesignLights Consortium® Qualified (pending)\*

### NEC and CEC

- Wet Locations, NEMA 4X, IP66

### UL Standards

- UL1598 Luminaires, UL1598A Marine

### CSA Standard

- cUL Listed to CSA Standard CSA C22.2 No. 250

### IEC Standard

- CE

\*Refer to [www.designlights.org](http://www.designlights.org) Qualified Products List under family models for full listing details. Not all models are approved for all application categories.

### Electrical ratings:

UNV1 driver	Input power (watts)	Input amps at 100-277 VAC	UNV34 driver	Input power (watts)	Input amps at 347-480 VAC
<b>PVML-3</b>	27	0.27-0.10	<b>PVML-3</b>	28	0.08-0.06
<b>PVML-5</b>	45	0.45-0.16	<b>PVML-5</b>	44	0.13-0.09
<b>PVML-7</b>	61	0.61-0.21	<b>PVML-7</b>	57	0.16-0.12
<b>PVML-7-S892</b>	60	0.60-0.23	<b>PVML-7-S892</b>	61	0.18-0.13
<b>PVML-9</b>	76	0.76-0.26	<b>PVML-9</b>	68	0.20-0.14
<b>PVML-9-S892</b>	80	0.80-0.29	<b>PVML-9-S892</b>	73	0.22-0.15
<b>PVML-11</b>	92	0.92-0.32	<b>PVML-11</b>	83	0.24-0.17
<b>PVML-11-S892</b>	97	0.97-0.35	<b>PVML-11-S892</b>	86	0.25-0.18
<b>PVML-13</b>	95	1.06-0.42	<b>PVML-13</b>	91	0.29-0.17
<b>PVML-13-S892</b>	95	1.10-0.36	<b>PVML-13-S892</b>	96	0.31-0.19

All models		UNV34		UNV1	
<b>Power factor</b>	≥0.90	<b>THD</b>	≤15%	<b>Voltage range, VAC*</b>	100-277V at 50/60 Hz
<b>Voltage range, VAC*</b>	347-480V at 50/60 Hz	<b>Voltage range, VDC</b>	127-250V		

\*IEC voltage: 100-240 VAC @ 50/60 Hz.

\*\*For PMVL3: PF>0.9 from 100-255 VAC.

### EMC / CE compliance:

If the dimming interface of the LED driver is connected to an external dimmer which is not provided with the luminaire, a ferrite core must be used on the input and dimming lines.

Approved ferrite cores are: Fair-Rite P/N 0431167281.

### Options:

- Wire guard with captive mounting hardware
- Trunnion mount with pin locking (ceiling mount required)
- Quick Clip for quick installation
- Diffused lens for glare reduction
- Redundant driver for prevention of total loss of illumination
- Teflon coating on lens for additional shatter protection
- Polycarbonate lens for areas where glass is prohibited
- Six-pole terminal block

### Accessories (ordered separately):

- Photocell, 120V, 50/60 Hz
- Photocell, 208-277V
- Occupancy sensor with photocell, 120/277 VAC
- Trunnion mount kit with redundant pin locking mechanism (ceiling mount required)
- Remote control for customizing occupancy sensor performance

### Standard materials:

- Lamp housing and adapter - die cast aluminum with Corro-free™ epoxy powder coat
- Lens - heat- and impact-resistant glass
- Gaskets - silicone
- External hardware - stainless steel
- Factory-sealed, no external seals required

### LED system:

- High intensity discrete LEDs
- Standard: cool white (5000K, 70 CRI); optional: warm white, (3000K, 80 CRI) or neutral white (4000K, 70 CRI)
- Custom Type I, III and V optics available

### Weights:

Luminaire	lbs.	kg.
<b>PVML-3 to PVML-7</b>	19.00	8.62
<b>PVML-9 - PVML-13</b>	19.20	8.70

Mounting module	lbs.	kg.
<b>Pendant</b>	1.25	0.57
<b>Cone pendant</b>	4.00	1.81
<b>Flexible pendant</b>	1.50	0.68
<b>Ceiling</b>	2.75	1.25
<b>Wall</b>	4.50	2.04
<b>Angled stanchion</b>	3.50	1.59
<b>Straight stanchion</b>	4.50	2.04

**U.S. (global headquarters):  
Eaton's Crouse-Hinds Division**

1201 Wolf Street  
Syracuse, NY 13208

(866) 764-5454  
FAX: (315) 477-5179  
FAX Orders Only:  
(866) 653-0640

[crousecustomerctr@eaton.com](mailto:crousecustomerctr@eaton.com)

**For more information:**

If further assistance is required, please contact an authorized Eaton Distributor, Sales Office, or Customer Service Department.

**Canada**

Toll Free: 800-265-0502  
FAX: (800) 263-9504  
FAX Orders only: (866) 653-0645

**Mexico/Latin America/Caribbean**

52-555-804-4000  
FAX: 52-555-804-4020  
[ventascentromex@eaton.com](mailto:ventascentromex@eaton.com)

**Europe (Germany)**

49 (0) 6271 806-500  
49 (0) 6271 806-476  
[info-ex@eaton.com](mailto:info-ex@eaton.com)

**Middle East**

971 4 8066100  
FAX: 971 4 8894813  
[chmesales@eaton.com](mailto:chmesales@eaton.com)

**Singapore**

65-6645-9888  
FAX: 65-6297-4819  
[chsi-sales@eaton.com](mailto:chsi-sales@eaton.com)

**China**

86-21-2899-3600  
FAX: 86-21-2899-4055  
[echsales@eaton.com](mailto:echsales@eaton.com)

**Korea**

82 2 6380 4032  
82-2-6380-4070  
[ECHKsales@eaton.com](mailto:ECHKsales@eaton.com)

**Australia**

1300-332-866  
FAX: 61-2-9693-5127  
[crousehindsanz@eaton.com](mailto:crousehindsanz@eaton.com)

**India**

91-124-4683888  
FAX: 91-124-4683899  
[cchindia@eaton.com](mailto:cchindia@eaton.com)

**Eaton**  
1000 Eaton Boulevard  
Cleveland, OH 44122  
United States  
[Eaton.com](http://Eaton.com)

© 2023 Eaton  
All Rights Reserved  
Printed in USA  
Publication No. 5478-0223  
February 2023

Eaton is a registered trademark.

All other trademarks are property of their respective owners.